

ORIGINAL INVESTIGATION

Open Access



# Impact of renal function on the underlying pathophysiology of coronary plaque composition in patients with type 2 diabetes mellitus

Kentaro Kakuta<sup>1,2</sup>, Kaoru Dohi<sup>1\*</sup>, Miho Miyoshi<sup>3</sup>, Takashi Yamanaka<sup>2</sup>, Masaki Kawamura<sup>2</sup>, Jun Masuda<sup>1</sup>, Tairo Kurita<sup>1</sup>, Toru Ogura<sup>4</sup>, Norikazu Yamada<sup>1</sup>, Yasuhiro Sumida<sup>3</sup> and Masaaki Ito<sup>1</sup>

## Abstract

**Background:** Both the progression of diabetic kidney disease and increased glycemic variability play important roles in the pathogenesis of coronary plaque formation via inflammatory pathways in patients with type 2 diabetes mellitus (T2DM). Therefore we evaluated the role of renal function in the contributory effects of blood glucose fluctuations and blood levels of inflammatory cytokine concentrations on the tissue characteristics of coronary plaques in patients with T2DM.

**Methods:** We prospectively enrolled 71 T2DM patients (mean age:  $68 \pm 9$ , male 79%) with 153 coronary artery lesions. Patients were divided into 2 groups according to their estimated glomerular filtration rate (eGFR) levels: Group 1 ( $\geq 60$  mL/min/1.73 m<sup>2</sup>, n = 40) and Group 2 (< 60 mL/min/1.73 m<sup>2</sup>, n = 31). All patients underwent continuous glucose monitoring (CGM) for 120 h and the mean amplitude of glycemic excursions (MAGE) was calculated. Serum tumor necrosis factor (TNF)- $\alpha$  was also measured. In addition, gray-scale coronary intravascular ultrasound (IVUS) and iMap-IVUS were performed in the coronary lesions with < 50% luminal reduction.

**Results:** In Group 1, MAGE correlated with percent lipidic volume (%LV) ( $r = 0.477$ ,  $p = 0.002$ ). In this group, stepwise multivariate linear regression analyses showed that only MAGE was independently associated with %LV ( $\beta = 0.477$ ,  $p = 0.002$ ). In contrast, in Group 2, only serum TNF- $\alpha$  correlated with percent fibrotic volume (%FV) ( $r = -0.471$ ,  $p = 0.007$ ), %LV ( $r = 0.496$ ,  $p = 0.005$ ) and percent necrotic volume (%NV) ( $r = 0.426$ ,  $p = 0.017$ ). In this group, stepwise multivariate linear regression analyses showed that only serum TNF- $\alpha$  was independently associated with each tissue characteristic (%FV  $\beta = -0.471$  and  $p = 0.007$ , %LV  $\beta = 0.496$  and  $p = 0.005$ , %NV:  $\beta = 0.426$  and  $p = 0.017$ ).

**Conclusions:** In T2DM patients, the tissue characteristics of coronary plaques were associated with MAGE in patients with  $eGFR \geq 60$  mL/min/1.73 m<sup>2</sup> and with serum TNF- $\alpha$  in those with  $eGFR < 60$  mL/min/1.73 m<sup>2</sup>.

**Keywords:** Mean amplitude of glycemic excursion, Serum tumor necrosis factor- $\alpha$ , Coronary plaque composition, iMap-IVUS, Renal function

## Introduction

Glycemic variability plays an important role in coronary plaque formation mainly via inflammatory pathways in

patients with type 2 diabetes mellitus (T2DM). Recent clinical studies have shown that high glucose fluctuation strongly contributes to increased coronary plaque vulnerability both at the culprit lesion of acute coronary syndrome (ACS) [1, 2] and at unrelated lesions [3–5]. The pathogenesis of diabetic kidney disease is also closely linked to chronic inflammatory processes and may contribute to subsequent progression of coronary

\*Correspondence: dohik@clin.medic.mie-u.ac.jp

<sup>1</sup> Department of Cardiology and Nephrology, Mie University Graduate School of Medicine, 2-174 Edobashi, Tsu 514-8507, Japan  
Full list of author information is available at the end of the article

atheromatous plaques. Therefore, the contribution of glycemic variability to the tissue characteristics of coronary plaques may differ depending on the renal function in T2DM. Gray-scale intravascular ultrasound (IVUS) is a popular intracoronary imaging modality for the evaluation of coronary plaques in the clinical setting. iMap-IVUS is the most recent radiofrequency-IVUS system to incorporate a 40-MHz rotating single element catheter [6]. It can classify coronary plaques into fibrotic, lipidic, necrotic or calcified components using spectral radiofrequency analysis with a classification algorithm generated from ex vivo histological findings [6, 7]. Accordingly, the aim of the present study was to determine whether the factors that contribute to the tissue characteristics of coronary plaques differ depending on renal function in patients with T2DM using iMap-IVUS.

## Methods

### Patient selection

The study group consisted of 77 patients with T2DM over 20 years old who underwent invasive coronary angiography (ICA) to evaluate coronary artery disease (CAD) in Yokkaichi Hazu Medical Center between March 2015 and October 2016. Among them, 1 patient with end-stage renal disease with an estimated glomerular filtration rate (eGFR) < 15 ml/min/1.73 m<sup>2</sup>, 2 patients with ACS and 1 patient with prior coronary artery bypass grafting were excluded from the study. Therefore, 73 patients underwent continuous glucose monitoring (CGM) in an outpatient setting within 14 days before or after ICA with IVUS. Two patients were excluded because of insufficient CGM data, and a total of 71 patients with known or suspected CAD finally underwent iMap-IVUS and CGM examinations. Written informed consent was obtained from all subjects, and the protocol was approved for use by the Human Studies Subcommittee of Yokkaichi Hazu Medical Center (reference number 84).

### Coronary angiography and imaging procedures

Selective invasive coronary angiography was performed using standard techniques after right and left intracoronary administration of 2.5 to 5 mg isosorbide dinitrate. Quantitative analysis of invasive coronary angiograms (QCA: QAngio XA 7.1.14.0, Medis Medical Imaging Systems, Leiden, Netherlands) was performed.

### Imaging analyses

#### Gray-scale and iMap-IVUS

Gray-scale coronary IVUS and iMap-IVUS were performed in the lesions with mild to moderate stenosis (QCA-assessed percent diameter stenosis < 50%) in previously untreated vessels [8]. Severe calcified lesions covering greater than 180° were excluded from the IVUS

assessment. After administration of 2.5 to 5 mg isosorbide dinitrate, an IVUS catheter (2.6 Fr, 40 MHz, Atlantis SR Pro2, Boston Scientific, Natick, MA, USA) was advanced into the target vessel, with the transducer positioned as distal as possible to the target lesion, and withdrawn using a motorized pullback device at a speed of 0.5 mm/s for 10 mm at each plaque [9]. The consoles used were iLab ultrasound systems (Boston Scientific). Images were recorded on DVD-R disks for subsequent off-line IVUS analysis. Two independent experienced investigators who were unaware of the patient profiles performed the IVUS analysis using validated planimetry software (echoPlaque4, INDEC Systems Inc., Santa Clara, CA, USA). In the gray-scale IVUS analysis, the cross-sectional area (CSA) was traced manually. The lumen-intimal border was traced, and the lumen CSA was calculated. The external elastic membrane (EEM)-adventitial border was traced, and the EEM CSA was determined. Plaque CSA was calculated as the EEM CSA minus the lumen CSA. These IVUS parameters were measured at the minimum lumen CSA sites and reference sites. The minimum lumen CSA site was determined as the location of the smallest amount of lumen in all analyzed cross-sections [6]. The remodeling index was defined as the ratio of EEM CSA at the measured lesion (minimum luminal site) to reference EEM CSA (average of the proximal and distal reference segments). Subsequently, EEM and lumen CSA were manually traced at 0.5-mm intervals for 10 mm length in each plaque. EEM, lumen and plaque (EEM CSA – lumen CSA) volumes were calculated using Simpson's method. The percent plaque volume was calculated as (plaque volume/EEM volume) × 100 (%). To obtain iMap images, the integrated backscatter values for each tissue component were expressed in decibels and calculated using a fast-Fourier transform of the frequency component of the backscattered signal from a small volume of tissue. In the iMap IVUS analysis (Boston Scientific), plaque components were then classified as fibrotic (light-green), lipidic (yellow), necrotic (pink) or calcified (light-blue) [6]. Quantitative volumetric iMap IVUS analyses were performed to calculate fibrotic, lipidic, necrotic, and calcified volumes from the sum of fibrotic, lipidic, necrotic, and calcified areas in each CSA at 0.5-mm intervals for the iMap images. Percent plaque volumes were automatically calculated as each plaque component volume/plaque volume × 100 (%). In patients who underwent multi-vessel IVUS examination, the mean values of fibrotic, lipidic, necrotic and calcified plaque components of multiple plaques were calculated.

### Biochemical markers

The blood samples were transported to the clinical laboratory of Yokkaichi Hazu Medical Center for further

processing and storage at a temperature of  $-80^{\circ}\text{C}$  within 0.5 h after blood collection. The eGFR of each patient was calculated from their serum creatinine (SCr) value and their age using the following equation:  $\text{eGFR (mL/min/1.73 m}^2) = 194 \times \text{Age}^{-0.287} \times \text{SCr}^{-1.094}$  (if female  $\times 0.739$ ) [10]. Frozen EDTA-plasma samples were transported under controlled conditions (at  $-80^{\circ}\text{C}$ ) to Tokyo, Japan, where the concentrations of tumor necrosis factor (TNF)- $\alpha$ , interleukin-6, high-sensitivity C-reactive protein, adiponectin, malondialdehyde-modified low-density lipoprotein, total homocysteine, asymmetric dimethyl-arginine and 8-iso-prostaglandin F $2\alpha$  were determined using a validated multiplex assay (SRL, Tokyo, Japan). Proteinuria ( $-$ ,  $\pm$ ,  $1+$ , or  $\geq 2+$ ) was assessed using a dipstick test for spot-urine (Uropaper III; Eikenkagaku, Japan), and was defined as present if the dipstick result was  $\geq 1+$  [11].

#### CGM system measurement

CGM was performed for 7 consecutive days in all patients, and the daily glucose profiles were analyzed using data obtained from day 2 to day 6 to avoid any bias due to either insertion or removal of the sensor. The CGM analysis software (CareLink iPro, Medtronic, Northridge, California) calculated the measured variables: 120-h mean glucose levels, the time in hyperglycemia/hypoglycemia and the mean amplitude of glycemic excursions (MAGE) [12], which represents fluctuations in blood glucose levels over a 24-h period and was calculated from the daily variations in blood glucose level, measured continuously by CGM over a period of 5 days. Times in hyperglycemia and hypoglycemia were defined as the times when blood glucose levels were  $\geq 200$  and  $< 70$  mg/dl, respectively [13]. All patients had daily meals during CGM.

#### Statistical analysis

Categorical variables are presented as percentage frequencies and were analyzed using  $\chi^2$  tests or Fisher exact tests as appropriate. Continuous normally distributed variables are expressed as mean  $\pm$  SD and were compared using the Student's two-tailed unpaired  $t$  test. Continuous data not normally distributed are expressed as median and interquartile range (IQR) and were analyzed using Mann–Whitney U tests. The Kolmogorov–Smirnov test was used to check for a normal distribution. Bivariate correlations between study variables were calculated using Spearman rank correlation coefficients. A one-way analysis of variance (ANOVA) with Tukey posthoc analysis was used for multiple comparisons. All statistical analyses were performed with SPSS version 19 (SPSS, Chicago, IL). Two-sided  $p$  values  $< 0.05$  were considered to indicate statistical significance.

## Results

#### Patient characteristics

Baseline patient characteristics on admission are shown in Table 1. The average age was  $68 \pm 9$  years, and the majority of patients were men among the group of 71 study participants. We divided the patients into two groups according to their eGFR levels: Group 1 ( $\geq 60$  mL/min/1.73 m $^2$ ,  $n = 40$ ) and Group 2 ( $< 60$  mL/min/1.73 m $^2$ ,  $n = 31$ ). There were 3 patients with eGFR  $< 30$  mL/min/1.73 m $^2$  in Group 2. Group 2 patients were older and had a higher rate of hypertension than those in Group 1. Antihypertensive, antiplatelet and statin medications on admission did not differ between the two groups. Regarding diabetes medications, only pioglitazone and metformin were more frequently prescribed in Group 1 than in Group 2 (Additional file 1: Table S1). Fasting plasma glucose and HbA1c values were  $121.2 \pm 23.5$  mg/dl and  $7.4 \pm 1.0\%$  among all 71 study participants, and these values were not different between the two patient groups. Uric acid was higher in Group 2 than in Group 1. Group 2 had a higher rate of proteinuria than Group 1.

#### CGM parameters

Variables measured by the CGM system are shown in Table 2. Although maximum blood glucose was higher in Group 2 than in Group 1, other parameters including MAGE were similar between the two groups. During CGM, blood glucose values largely remained within the range of 90–200 mg/dl as recommended by the guideline [14]; however, various glucose variability patterns were observed and asymptomatic hyperglycemia and hypoglycemia were found in some patients in both groups to the same extent.

#### Quantitative parameters of QCA, gray-scale and iMap-IVUS

A total of 153 plaques were assessed in 71 patients. Twenty-nine patients underwent a 3-vessel IVUS examination (15 patients in Group 1 and 14 patients in Group 2), whereas 24 patients underwent a 2-vessel IVUS examination (12 patients in Group 1 and 12 patients in Group 2) and 18 patients underwent 1-vessel IVUS examination (13 patients in Group 1 and 5 patients in Group 2). Table 3 shows quantitative QCA and IVUS findings. There were no significant differences in reference diameter, plaque location and percentage of diameter stenosis in each vessel between Group 1 and Group 2. In gray-scale IVUS, there were no significant differences in EEM CSA, lumen CSA, plaque CSA and remodeling index between the two groups. In addition, there were no significant differences in EEM volume, lumen volume, plaque volume and percent plaque volume between the two groups. Although absolute fibrotic volume was significantly higher in Group 1 than in Group 2, percent fibrotic volume (%FV), percent lipidic volume (%LV),

**Table 1 Patient characteristics**

Variables	Overall (n = 71)	Group 1 (n = 40)	Group 2 (n = 31)	p value
Age, years	68 ± 9	66 ± 9	71 ± 9	0.027
Male, n (%)	56 (79)	34 (83)	22 (71)	0.154
BMI, kg/m <sup>2</sup>	24.0 ± 3.6	24.3 ± 4.0	23.5 ± 2.9	0.343
Duration of DM, years	15.3 ± 8.8	14.4 ± 9.8	16.3 ± 7.4	0.350
Prior PCI, n (%)	38 (54)	23 (56)	15 (48)	0.448
Hypertension n (%)	60 (85)	29 (71)	31 (100)	0.002
Dyslipidemia, n (%)	49 (69)	26 (63)	23 (74)	0.409
Current smoker, n (%)	25 (35)	15 (37)	10 (32)	0.649
LVEF, %	65 ± 11	67 ± 8	63 ± 13	0.440
Laboratory data				
Serum creatinine, mg/dl	0.92 ± 0.29	0.76 ± 0.13	1.12 ± 0.32	< 0.001
eGFR, ml/min/1.73 m <sup>2</sup>	65.5 ± 19.1	78.3 ± 14.2	49.1 ± 10.0	< 0.001
Cholesterol, mg/dl				
Total	175.8 ± 31.9	177.8 ± 33.3	173.4 ± 30.4	0.556
HDL	47.4 ± 13.0	48.3 ± 13.1	46.4 ± 13.0	0.430
LDL	97.6 ± 26.2	100.3 ± 27.7	94.1 ± 24.1	0.326
Triglyceride, mg/dl	153.4 ± 89.9	155.1 ± 97.4	151 ± 80.7	0.724
Uric acid, mg/dl	5.9 ± 1.5	5.5 ± 1.5	6.4 ± 1.3	0.010
BNP, pg/ml	23.7 (9.1–72.3)	19.9 (10.2–42.9)	29.1 (9.1–83.0)	0.128
Conventional glucose indicators				
Fasting plasma glucose, mg/dl	121.2 ± 23.5	117.9 ± 21.3	125.4 ± 25.7	0.188
HbA1c, %	7.4 ± 1.0	7.3 ± 1.2	7.4 ± 0.8	0.180
1,5-AG, µg/ml	12.9 ± 8.4	12.0 ± 9.0	13.9 ± 7.6	0.226

Values are mean ± SD or number of patients (%). Group 1: ≥ 60 mL/min/1.73 m<sup>2</sup>, Group 2: < 60 mL/min/1.73 m<sup>2</sup>. p values for Group 1 vs. Group 2

BMI body mass index; DM diabetes mellitus; PCI percutaneous coronary intervention; LVEF left ventricular ejection fraction; eGFR estimated glomerular filtration rate; HDL high-density lipoprotein; LDL low-density lipoprotein; BNP brain natriuretic peptide; HbA1c hemoglobin A1c; 1,5-AG 1,5-anhydroglucitol

**Table 2 Variables measured by the continuous glucose monitoring system**

Variables	Overall (n = 71)	Group 1 (n = 40)	Group 2 (n = 31)	p value
Maximum blood glucose, mg/dl	274.6 ± 58.2	262.6 ± 49.9	290.2 ± 64.9	0.046
Minimum blood glucose, mg/dl	71.0 ± 24.7	71.1 ± 21.2	70.9 ± 29.0	0.566
Mean blood glucose, mg/dl	151.3 ± 35.8	145.0 ± 29.5	159.6 ± 41.6	0.154
MAGE, mg/dl	78.9 ± 24.9	75.2 ± 22.1	83.6 ± 27.7	0.242
Time in Hyperglycemia, %	9.6 (3.8–25.2)	8.8 (3.2–13.8)	12.7 (4.4–30.8)	0.344
Time in Hypoglycemia, %	0 (0–2.2)	0 (0–1.5)	0 (0–2.6)	0.591
Time in hyperglycemia, hours	10.6 (3.1–27.0)	8.8 (2.3–15.4)	15.2 (5.3–37.0)	0.178
Time in hypoglycemia, hours	0 (0–2.7)	0 (0–1.6)	0 (0–3.1)	0.599

Values are mean ± SD (%). Group 1: ≥ 60 mL/min/1.73 m<sup>2</sup>, Group 2: < 60 mL/min/1.73 m<sup>2</sup>. p values for Group 1 vs. Group 2

Time in hyperglycemia was defined as the time when blood glucose levels were equal to or greater than 200 mg/dl. Time in hypoglycemia was defined as the time when blood glucose levels were under 70 mg/dl. MAGE, mean amplitude of glycemic excursion

percent necrotic volume (%NV) and percent calcified volume (%CV) were similar in the two groups.

#### Intra- and inter-observer variabilities for IVUS analysis

Intra- or interobserver intra-class correlation coefficients (ICCs) for the EEM volume, lumen volume, and plaque volume were 0.929 and 0.989, 0.989 and 0.986, and 0.988 and 0.957, respectively. The intra- and interobserver

ICCs for the %FV, %LV, %NV and %CV were 0.987 and 0.974, 0.980 and 0.957, 0.981 and 0.970, and 0.959 and 0.963, respectively.

#### Biochemical markers

Biochemical markers are shown in Table 4. TNF-α, total homocysteine and 8-iso PGF2α were significantly greater in Group 2 than in Group 1.

**Table 3 IVUS**

Variables	Overall (n = 71)	Group 1 (n = 40)	Group 2 (n = 31)	p value
QCA analysis				
Reference diameter, mm	2.7 ± 0.7	2.6 ± 0.6	2.8 ± 0.8	0.186
Diameter stenosis, %	21.9 ± 12.9	23.6 ± 13.2	19.8 ± 12.2	0.078
Plaque location, n (%)				
LAD	51 (33.3)	27 (32.9)	24 (33.8)	0.360
LC	54 (35.3)	28 (34.2)	26 (36.6)	0.177
RCA	48 (31.4)	27 (32.9)	21 (29.6)	0.983
Diameter stenosis, %				
LAD	22.1 ± 12.5	23.6 ± 14.0	20.4 ± 10.6	0.361
LC	23.3 ± 16.8	24.8 ± 14.0	20.2 ± 13.1	0.219
RCA	21.1 ± 11.7	20.9 ± 11.1	21.3 ± 12.6	0.906
Gray-scale IVUS analysis				
EEM CSA, mm <sup>2</sup>	14.0 ± 4.9	14.0 ± 4.8	14.1 ± 5.0	0.953
Lumen CSA, mm <sup>2</sup>	7.8 ± 3.7	7.5 ± 3.4	8.2 ± 3.9	0.284
Plaque CSA, mm <sup>2</sup>	6.2 ± 2.5	6.5 ± 2.6	5.8 ± 2.4	0.109
Remodeling index	0.81 ± 0.22	0.83 ± 0.25	0.78 ± 0.20	0.181
EEM volume, mm <sup>3</sup>	140.3 ± 48.9	139.9 ± 48.1	140.7 ± 50.0	0.953
Lumen volume, mm <sup>3</sup>	78.4 ± 36.5	74.9 ± 34.3	82.4 ± 38.8	0.282
Plaque volume, mm <sup>3</sup>	61.9 ± 25.2	65.0 ± 25.7	58.3 ± 24.3	0.109
Plaque volume, %	45.0 ± 12.4	47.2 ± 11.6	42.41 ± 12.9	0.070
iMap IVUS analysis				
Fibrous volume, mm <sup>3</sup> (%)	38.4 ± 14.1 (64.6 ± 12.8)	40.2 ± 13.2 (63.6 ± 13.4)	36.3 ± 14.8 (65.6 ± 11.9)	0.027 (0.106)
Lipid volume, mm <sup>3</sup> (%)	7.1 ± 4.4 (10.9 ± 3.5)	7.5 ± 4.6 (10.8 ± 3.4)	6.7 ± 4.2 (10.9 ± 3.7)	0.281 (0.421)
Necrotic volume, mm <sup>3</sup> (%)	15.4 ± 12.2 (22.3 ± 9.6)	16.7 ± 12.4 (23.1 ± 10.1)	13.8 ± 11.8 (21.4 ± 8.9)	0.102 (0.109)
Calcified volume, mm <sup>3</sup> (%)	1.5 ± 1.7 (2.3 ± 1.9)	1.9 ± 2.0 (2.5 ± 2.0)	1.1 ± 1.1 (2.0 ± 1.7)	0.063 (0.251)

Values are mean ± SD (%). Group 1: ≥ 60 mL/min/1.73 m<sup>2</sup>, Group 2: < 60 mL/min/1.73 m<sup>2</sup>. p values for Group 1 vs. Group 2. EEM CSA, lumen CSA, and plaque CSA were measured at the minimum lumen CSA site in each plaque

IVUS intravascular ultrasound; QCA quantitative coronary angiography; LAD left anterior descending artery; LC left circumflex artery; RCA right coronary artery; EEM external elastic membrane; CSA cross-sectional area

**Table 4 Biochemical markers**

Variables	Overall (n = 71)	Group 1 (n = 40)	Group 2 (n = 31)	p value
TNF-α, pg/ml	1.2 (0.9–1.75)	1.1 (0.9–1.5)	1.6 (0.9–1.9)	0.041
IL-6, pg/ml	1.8 (1.2–2.75)	1.8 (1.175–2.725)	2 (1.3–2.6)	0.812
hs-CRP, ng/ml	432 (243–781.5)	430 (260–812.5)	448 (227–717.5)	0.469
Adiponectin, μg/ml	7 (5.6–11.35)	6.7 (5.35–10.85)	8.2 (6.25–12.05)	0.219
MDA-LDL, U/l	83 (64.5–102.5)	77.5 (62.75–95.25)	85 (68–107.5)	0.321
Total homocysteine, nmol/ml	10.5 (8.85–13)	99.9 (8.55–12.375)	11.2 (9.9–14.65)	0.022
ADMA, μmol/l	0.46 ± 0.07	0.45 ± 0.07	0.47 ± 0.07	0.169
8-iso PGF2α, pg/ml	17 (13.5–23.5)	16 (13–19.25)	19 (15.5–27)	0.027

Values are mean ± SD. Group 1: ≥ 60 mL/min/1.73 m<sup>2</sup>, Group 2: < 60 mL/min/1.73 m<sup>2</sup>. p values for Group 1 vs. Group 2

TNF tumor necrosis factor; IL-6 interleukin-6; hs-CRP high sensitivity C-reactive protein; MDA-LDA malondialdehyde LDL; ADMA asymmetric dimethylarginine; PGF2α prostaglandin F2α; other abbreviations as in Table 1

#### Relationships of coronary plaque composition to clinical and laboratory variables

For the whole patient population, there was a significant correlation only between %LV and MAGE ( $r = 0.356$ ,

$p = 0.002$ ), and stepwise multivariate linear regression analyses showed that only MAGE was independently associated with %LV ( $\beta = 0.356$ ,  $p = 0.002$ , Table 5 and Fig. 1). In Group 1, %LV was positively correlated with

MAGE ( $r = 0.477$ ,  $p = 0.002$ ) and HbA1c ( $r = 0.365$ ,  $p = 0.020$ ), and %CV was negatively correlated with MAGE ( $r = -0.334$ ,  $p = 0.035$ ) (Table 6 and Fig. 2). Stepwise multivariate linear regression analyses showed that only MAGE was independently associated with %LV and %CV (%LV  $\beta = 0.477$ ,  $p = 0.002$ , and %CV  $\beta = 0.334$ ,  $p = 0.035$ ) (Table 6). In contrast, %FV was negatively correlated with the serum level of TNF- $\alpha$  ( $r = -0.471$ ,  $p = 0.007$ ), and %LV and %NV were positively correlated with the serum level of TNF- $\alpha$  (%LV:  $r = 0.496$ ,  $p = 0.005$ , and %NV  $r = 0.426$ ,  $p = 0.017$ ) in Group 2 (Table 7 and Fig. 3). In this group, stepwise multivariate linear regression analyses showed that only the serum level of TNF- $\alpha$  was independently associated with %FV, %LV and %NV (%FV  $\beta = -0.471$ ,  $p = 0.007$ , %LV  $\beta = 0.496$ ,  $p = 0.002$ , %NV  $\beta = 0.426$ ,  $p = 0.017$ ) (Table 7). However, eGFR had no significant correlation with serum TNF- $\alpha$  and coronary plaque characteristics in Group 2 (data not shown). The tissue characteristics of coronary plaque were not different between patients with and without proteinuria among all patients and within Groups 1 and 2 (data not shown).

Figure 4 shows representative CGM data over a period of 5 days (left) and iMap-coronary intravascular ultrasound images (right) in a patient with eGFR  $\geq 60$  ml/min/1.73 m<sup>2</sup>, high MAGE and intermediate level of serum TNF- $\alpha$  (A), a patient with eGFR  $\geq 60$  ml/min/1.73 m<sup>2</sup>, low MAGE and intermediate level of serum TNF- $\alpha$  (B), a patient with eGFR  $< 60$  ml/min/1.73 m<sup>2</sup>, intermediate level of MAGE and high serum TNF- $\alpha$  (C) and a patient with eGFR  $< 60$  ml/min/1.73 m<sup>2</sup>, intermediate level of MAGE and low serum TNF- $\alpha$  (D). Patient A had higher MAGE and greater lipidic and necrotic plaques than patient B. In contrast, patient C had similar MAGE but higher serum TNF- $\alpha$  and greater lipidic and necrotic plaques compared with patient D.

To investigate the synergistic effect of high MAGE and high TNF $\alpha$  on coronary plaque vulnerability, the 71 patients were divided into four groups according to the median values of MAGE (78.5 mg/dl) and TNF- $\alpha$  (1.2 pg/ml); Group A high MAGE and high TNF- $\alpha$ ,  $n = 22$ , Group B high MAGE and low TNF- $\alpha$ ,  $n = 14$ , Group C low MAGE and high TNF- $\alpha$ ,  $n = 19$ , and Group D low MAGE and low TNF- $\alpha$ ,  $n = 16$ . There was a statistically significant difference in %LV between groups as determined by one-way ANOVA ( $F(3,67) = 3.239$ ,  $p = 0.027$ ). A Tukey post hoc test revealed that Group A had greater %LV than Group D (Group A  $12.2 \pm 2.9\%$ , and Group D  $9.7 \pm 2.8\%$ ,  $p < 0.05$ ), but %LV was not different among Groups A, B ( $12.0 \pm 3.3\%$ ) and C ( $10.6 \pm 2.7\%$ ). In contrast, there were no statistically significant differences in %FV, %NV and %CV between groups.

## Discussion

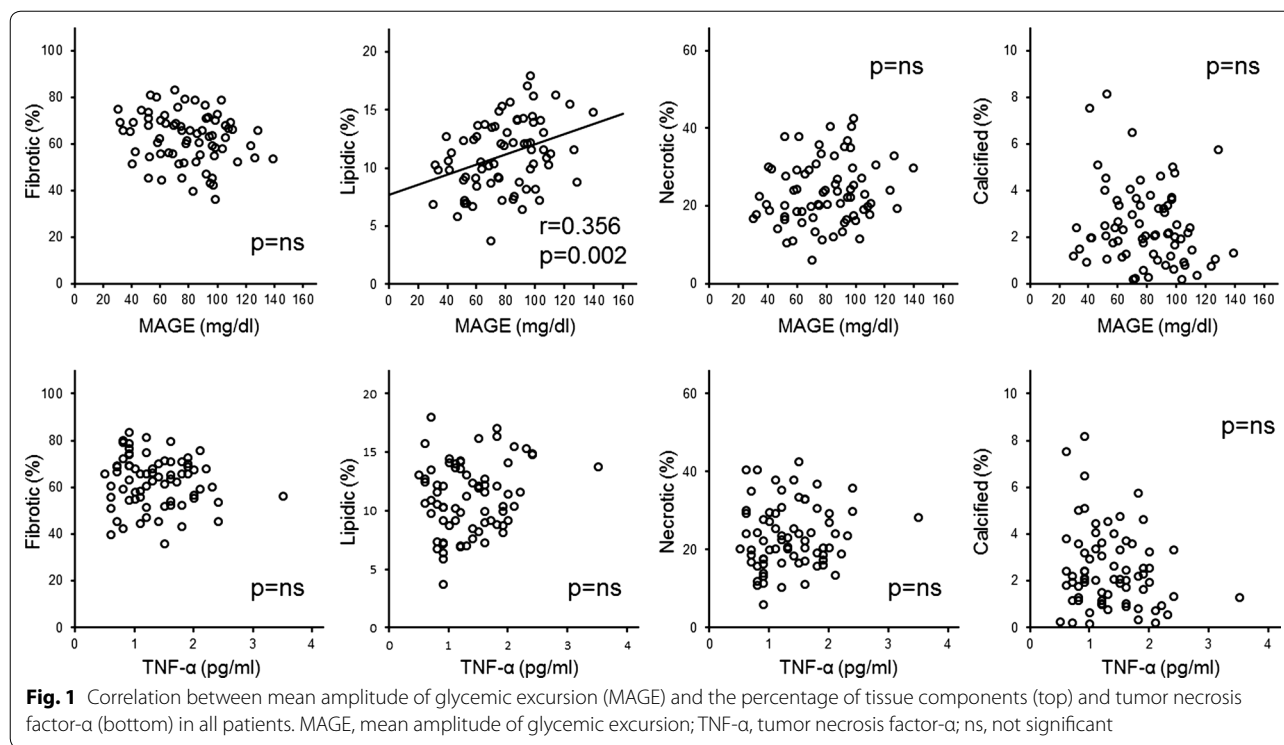
The present study revealed that the factors that contribute to the tissue characteristics of coronary plaques differ depending on the renal function of patients with T2DM. As previously reported, the MAGE value strongly contributed to increased lipid plaque content among the whole patient population and within the patient group having eGFR  $\geq 60$  ml/min/1.73 m<sup>2</sup> [3–5]. Interestingly, serum TNF- $\alpha$  but not MAGE strongly contributed to increased lipid and necrotic plaque contents and decreased fibrous plaque content in patients with reduced eGFR. Although all previous studies assessed the effects of MAGE on coronary plaque vulnerability by using CGM systems during hospitalization [1–5], our study demonstrated CGM in an outpatient setting over a period of 5 days to obtain information about real-life glycemic profiles.

T2DM is a well-known risk factor for CAD, and insulin resistance is strongly associated with the formation of high-risk lipid-rich vulnerable plaques [15, 16]. In addition, recent clinical studies have consistently shown that high glucose fluctuation strongly contributes to increased coronary plaque vulnerability both at the culprit lesion of ACS [1, 2] and unrelated lesions [3–5]. Kuroda et al. reported that glucose fluctuation expressed as MAGE played an important role in the progression of necrotic cores within the coronary plaque and formation of lipid-rich plaque with a thin-cap fibroatheroma in 70 patients with stable CAD pretreated with lipid-lowering therapy [3]. It is recognized that inflammation and oxidative stress play pivotal roles in the progression of atherosclerosis and plaque instability [4, 17–19]. A recent experimental study in a rat model revealed that acute blood glucose fluctuation causes inflammation and oxidative stress in endothelial cells, increases the adhesion of monocytes to endothelial cells, and elevates endothelial cell apoptosis, resulting in cardiovascular injury [20]. Clinically, Rizzo et al. demonstrated that MAGE reduction achieved with dipeptidyl peptidase-IV inhibitors is associated with reduction of oxidative stress and markers of systemic inflammation in T2DM [21]. However, no clinical studies have demonstrated the synergistic effect of MAGE and inflammation and/or oxidative stress on coronary plaque vulnerability. Consistent with previous observations, the present study showed that MAGE values were significantly and positively correlated with lipid plaque content among the whole patient population and within the patient group with eGFR  $\geq 60$  ml/min/1.73 m<sup>2</sup>. However, there was no relationship between MAGE and plasma concentrations of inflammation and oxidative stress markers.

**Table 5 Univariate and multivariate linear regression for all patients**

	Fibrotic			Lipidic			Necrotic			Calcified		
	Univariate	Multivariate		Univariate	Multivariate		Univariate	Multivariate		Univariate	Multivariate	
	Coeffi- cients	p value	Coeffi- cients	Coeffi- cients	p value	Coeffi- cients	Coeffi- cients	p value	Coeffi- cients	Coeffi- cients	p value	Coeffi- cients
Age	0.084	0.487	-	-0.070	0.564	-	-0.078	0.516	-	0.135	0.263	-
Duration of DM	-0.039	0.747	-	0.049	0.688	-	0.048	0.690	-	0.030	0.806	-
Uric acid	-0.049	0.686	-	0.102	0.399	-	0.056	0.642	-	-0.142	0.236	-
HbA1c	-0.050	0.681	-	0.177	0.140	-	0.069	0.566	-	-0.146	0.223	-
Mean BG	-0.173	0.149	-	0.206	0.085	-	0.160	0.181	-	0.043	0.725	-
MAGE	-0.199	0.097	-	0.356	0.002	0.002	0.169	0.159	-	-0.186	0.120	-
Time in hyperglycemia	-0.204	0.089	-	0.334	0.004	-	0.183	0.127	-	-0.099	0.413	-
Time in hypoglycemia	0.071	0.555	-	0.027	0.824	-	-0.095	0.428	-	-0.034	0.780	-
TNF-α	-0.084	0.487	-	0.133	0.270	-	0.098	0.414	-	-0.129	0.284	-
Total homo-cysteine	-0.023	0.850	-	-0.027	0.825	-	0.070	0.564	-	-0.059	0.623	-
8-iso-PGF2α	0.073	0.545	-	-0.035	0.772	-	-0.088	0.467	-	-0.150	0.211	-

Group 1: ≥ 60 mL/min/1.73 m<sup>2</sup>, Group 2: < 60 mL/min/1.73 m<sup>2</sup>. Abbreviations are as shown in Tables 1, 2 and 4



Chronic kidney disease (CKD) is another cause of systemic inflammation and oxidative stress and is recognized as an independent risk factor for CAD. Several investigators have studied the effects of renal function on coronary plaque characteristics [22–27]. Kawai et al. showed that the severity of coronary artery stenosis was higher in mild CKD patients with eGFR between 30 and 59 ml/min/1.73 m<sup>2</sup>, although there was no significant difference in the prevalence of high-risk plaque when compared to patients with eGFR  $\geq$  60 ml/min/1.73 m<sup>2</sup> [22]. In contrast, other previous studies demonstrated that lower eGFR levels were associated with greater lipid and lower fibrous contents both in the target lesion of PCI [23] and non-target lesions with percent diameter stenosis < 50% [24]. Kato et al. also demonstrated that patients with CKD had a larger lipid index compared with non-CKD patients and that a lower eGFR was an independent risk factor for a larger lipid index [25]. The prevalence of T2DM in their studies was less than 50%, and T2DM can confound the relationship between the tissue characteristics of coronary plaque and renal function. The tissue characteristics of coronary plaque were not different between patients with preserved and reduced eGFR among the T2DM population in the present study. CKD also strongly contributes to coronary calcification, especially in patients with advanced CKD and end-stage renal disease [26, 27], but the effects of CKD on the tissue characteristics of coronary plaque can vary depending on whether the patient has T2DM and

the stage of CKD. The degree of coronary calcification was similar between patients with eGFR  $\geq$  60 ml/min/1.73 m<sup>2</sup> and those with eGFR < 60 ml/min/1.73 m<sup>2</sup> in the present study, presumably because only a few patients had advanced CKD with eGFR < 30 ml/min/1.73 m<sup>2</sup>. Proteinuria is another important determinant of the risk of cardiovascular disease and mortality and may contribute to coronary plaque vulnerability. Shimbo et al. demonstrated that patients with proteinuria had coronary plaques with significantly greater percentage lipid volume compared with those without, and that the presence of proteinuria is an independent predictor for lipid-rich plaque [11]. About 44% of patients had T2DM in their studies, and the rate of T2DM was much higher in patients with proteinuria than among those without it. Although T2DM itself was not identified as an independent predictor for lipid-rich plaque, T2DM can confound the relationship between tissue characteristics of coronary plaque and proteinuria. The tissue characteristics of coronary plaque were not different between patients with and without proteinuria among the whole patient population and even within the two eGFR groups in the present study, presumably because all study participants had T2DM. In addition, severe calcified lesions covering greater than 180° were excluded from the IVUS assessment, which can influence the relationship between coronary calcification and CKD.

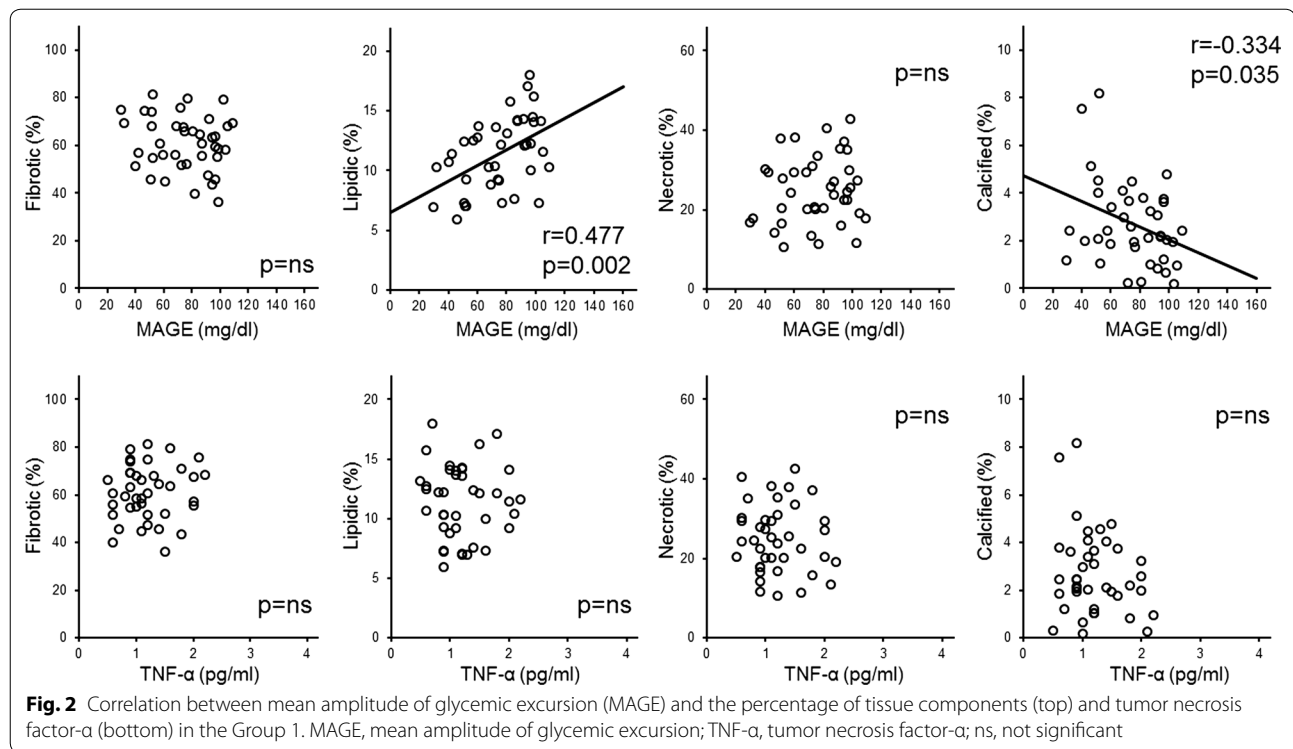
No previous clinical studies have taken into account eGFR in the relationship between MAGE and coronary



**Table 6 Univariate and multivariate linear regression for group 1**

	Fibrotic						Lipidic						Necrotic						Calcified					
	Univariate		Multivariate		Univariate		Multivariate		Univariate		Multivariate		Univariate		Multivariate		Univariate		Multivariate		Univariate		Multivariate	
	Coeffi- cients	p value	Coeffi- cients	p value	Coeffi- cients	p value	Coeffi- cients	p value	Coeffi- cients	p value	Coeffi- cients	p value	Coeffi- cients	p value	Coeffi- cients	p value	Coeffi- cients	p value	Coeffi- cients	p value	Coeffi- cients	p value		
Age	0.001	0.997	-	-	0.158	0.331	-	-	-0.033	0.841	-	-	-0.121	0.458	-	-	-0.033	0.841	-	-	-0.121	0.458	-	
Duration of DM	-0.027	0.869	-	-	0.096	0.556	-	-	0.002	0.992	-	-	0.000	0.998	-	-	0.002	0.992	-	-	0.000	0.998	-	
Uric acid	-0.098	0.549	-	-	-0.014	0.933	-	-	0.139	0.392	-	-	-0.010	0.949	-	-	0.139	0.392	-	-	-0.010	0.949	-	
HbA1c	-0.156	0.337	-	-	0.365	0.020	-	-	0.145	0.372	-	-	-0.319	0.045	-	-	0.145	0.372	-	-	-0.319	0.045	-	
Mean BG	-0.056	0.733	-	-	0.212	0.188	-	-	-0.004	0.981	-	-	0.010	0.951	-	-	-0.004	0.981	-	-	0.010	0.951	-	
MAGE	-0.173	0.286	-	-	0.477	0.002	0.477	0.002	0.131	0.420	-	-	-0.334	0.035	-	-	0.131	0.420	-	-	-0.334	0.035	0.035	
Time in hyperglycemia	-0.084	0.605	-	-	-0.290	0.069	-	-	0.025	0.879	-	-	-0.077	0.638	-	-	0.025	0.879	-	-	-0.077	0.638	-	
Time in hypoglycemia	-0.172	0.288	-	-	0.242	0.133	-	-	0.162	0.317	-	-	-0.082	0.613	-	-	0.162	0.317	-	-	-0.082	0.613	-	
TNF-α	-0.107	0.510	-	-	-0.036	0.824	-	-	-0.087	0.593	-	-	-0.214	0.184	-	-	-0.087	0.593	-	-	-0.214	0.184	-	
Total homo-cysteine	0.088	0.587	-	-	-0.107	0.512	-	-	-0.063	0.697	-	-	-0.083	0.611	-	-	-0.063	0.697	-	-	-0.083	0.611	-	
8-iso-PGF2α	0.024	0.883	-	-	-0.084	0.607	-	-	-0.016	0.923	-	-	0.066	0.688	-	-	-0.016	0.923	-	-	0.066	0.688	-	

Group 1:  $\geq 60$  mL/min/1.73 m<sup>2</sup>, Group 2:  $< 60$  mL/min/1.73 m<sup>2</sup>. Abbreviations are as shown in Tables 1, 2 and 4



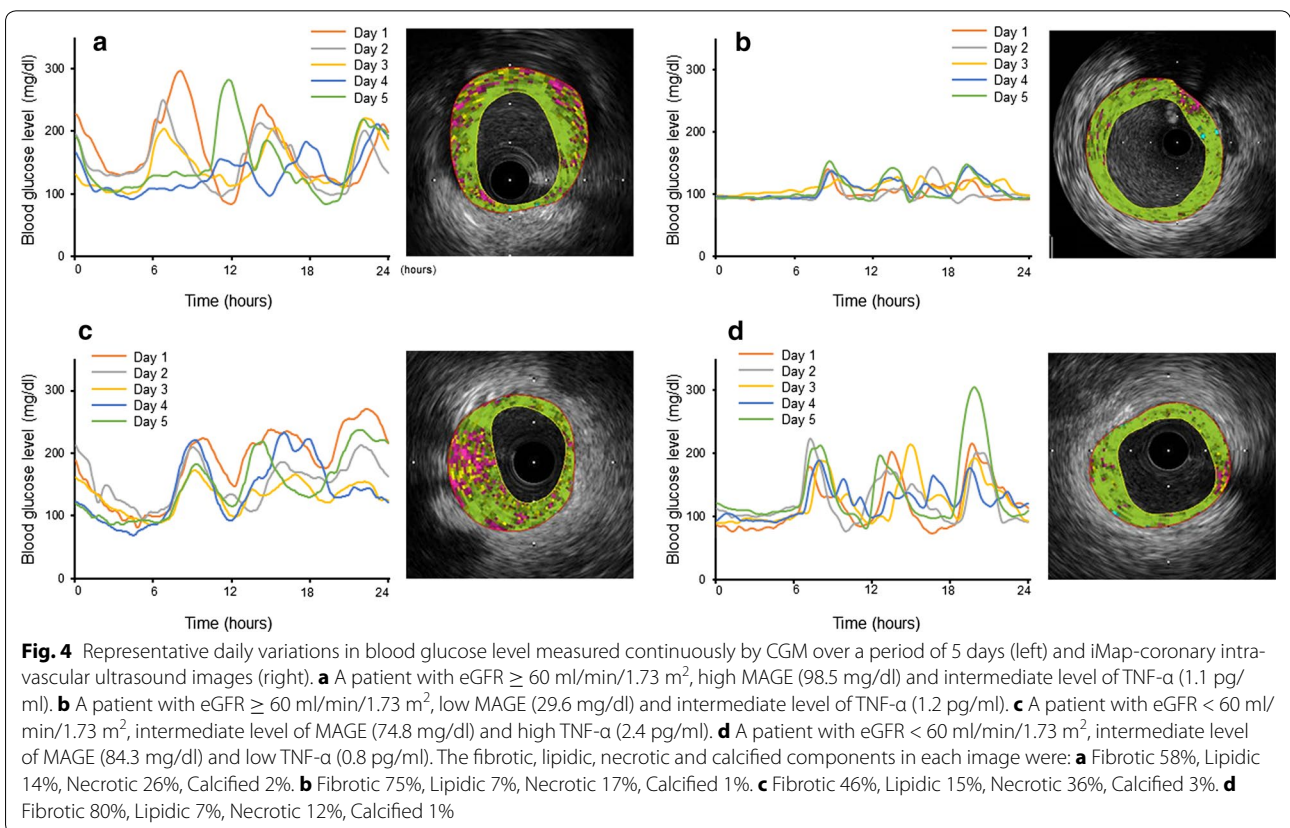
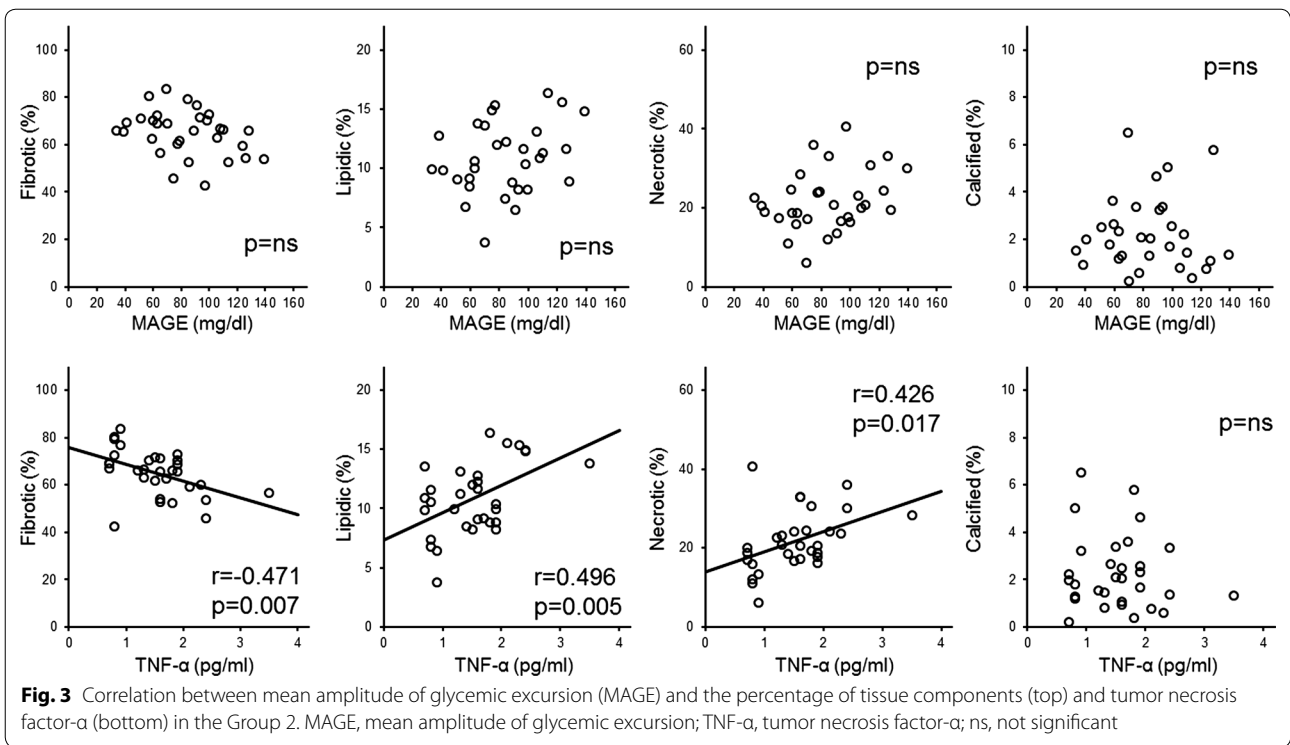
plaque characteristics. The present study revealed for the first time that the MAGE value strongly contributes to increased lipid plaque content only in patients with  $eGFR \geq 60$  ml/min/1.73 m<sup>2</sup>, and we found that patients with  $eGFR < 60$  ml/min/1.73 m<sup>2</sup> had significantly higher serum levels of TNF- $\alpha$  than those with  $eGFR \geq 60$  ml/min/1.73 m<sup>2</sup>. Interestingly, the serum level of TNF- $\alpha$  but not MAGE was identified as an independent contributor to increased lipid and necrotic plaque contents and decreased fibrous plaque content in patients with  $eGFR < 60$  ml/min/1.73 m<sup>2</sup>. These results may indicate that the influence of glucose fluctuation on coronary plaque formation is attenuated in the setting of CKD, or that CKD-related inflammation surpasses the MAGE-related inflammatory process in the progression of coronary plaque formation. TNF- $\alpha$  is a well-known potent pro-inflammatory cytokine involved in the pathogenesis of arteriosclerosis, and plays a pivotal role in orchestrating the cytokine cascade in many inflammatory diseases because of this role as a “master-regulator” of inflammatory cytokine production [28]. Kim et al. induced atherosclerotic plaque in 24 iliac arteries from 12 rabbits with a combination of a high cholesterol diet, endothelial denudation, and injection into the vessel wall of either saline (n = 5), olive oil (n = 6), or inflammatory proteins [n = 13, high-mobility group protein B1 (HMGB1) n = 8 and TNF- $\alpha$  n = 5]. They found that macrophage infiltration was present to a higher degree in the HMGB1 and

TNF- $\alpha$  groups, compared with the oil or saline groups. In addition, lipid rich plaques were more frequently detected in the inflammatory protein group on optical coherence tomography [29]. They concluded that advanced atheromatous plaques, including lipid rich plaques, were more frequently induced by the injection of pro-inflammatory proteins, compared to the controls. Furthermore, the pro-inflammatory groups showed increased expression of TNF- $\alpha$  and HMGB1 within the intima and media of the vessel, compared with either the saline or oil injected groups. These findings suggest that direct tissue injection of pro-inflammatory proteins may induce potent inflammation and promote the development of an advanced atheromatous plaque. CKD is one of the most important factors associated with a significant increase in TNF- $\alpha$  activity [30] and influences macrophage behavior [31]. Interestingly, a very recent study demonstrated that the plasma levels of circulating TNF receptors (cTNFRs) are significantly increased in CKD patients and are closely correlated with kidney function [32]. Because eGFR had no significant correlation with TNF- $\alpha$  and coronary plaque characteristics in patients with  $< 60$  ml/min/1.73 m<sup>2</sup>, the increased expression of circulating and/or coronary plaque TNFRs may explain the strong association between plasma TNF- $\alpha$  and tissue characteristics of coronary plaques only in patients with reduced eGFR. Although the results in the present study indicated no synergistic effect of high MAGE and high

**Table 7 Univariate and multivariate linear regression for group 2**

	Fibrotic			Lipidic			Necrotic			Calcified						
	Univariate		Multivariate	Univariate		Multivariate	Univariate		Multivariate	Univariate		Multivariate				
	Coeffi- cients	p value	Coeffi- cients	p value	Coeffi- cients	p value	Coeffi- cients	p value	Coeffi- cients	p value	Coeffi- cients	p value				
Age	0.087	0.641	-	-	-0.311	0.088	-	-	-0.069	0.713	-	-	0.395	0.028	0.395	0.028
Duration of DM, years	-0.088	0.636	-	-	-0.097	0.602	-	-	0.103	0.581	-	-	0.232	0.208	-	-
Uric acid	-0.146	0.434	-	-	0.382	0.034	-	-	0.093	0.618	-	-	-0.286	0.119	-	-
HbA1c	-0.210	0.258	-	-	0.128	0.493	-	-	0.202	0.275	-	-	0.065	0.728	-	-
Mean BG	-0.307	0.093	-	-	0.217	0.241	-	-	0.288	0.117	-	-	0.079	0.673	-	-
MAGE	-0.331	0.069	-	-	0.283	0.123	-	-	0.304	0.097	-	-	0.022	0.908	-	-
Time in hyperglycemia	-0.316	0.083	-	-	0.220	0.235	-	-	0.293	0.110	-	-	0.107	0.566	-	-
Time in hypoglycemia	0.252	0.171	-	-	-0.265	0.149	-	-	-0.240	0.193	-	-	0.120	0.521	-	-
TNF-α	-0.471	0.007	-	0.007	0.496	0.005	0.496	0.005	0.426	0.017	0.426	0.017	-0.112	0.548	-	-
Total homocysteine	-0.226	0.222	-	-	0.153	0.413	-	-	0.250	0.174	-	-	-0.117	0.530	-	-
8-iso-PGF2α	-0.029	0.878	-	-	0.177	0.342	-	-	0.011	0.954	-	-	-0.213	0.251	-	-

Group 1: ≥ 60 mL/min/1.73 m<sup>2</sup>, Group 2: < 60 mL/min/1.73 m<sup>2</sup>. Abbreviations as shown in Tables 1, 2 and 4



TNF $\alpha$  on coronary plaque vulnerability, further study is warranted.

### Study limitations

In terms of the limitations of this study, first, this single-center study enrolled only a small number of subjects, which limited clinical interpretation. Second, the time course of progression of coronary atheromatous plaques was not examined in the present study. Third, expressions of inflammatory cytokines and their receptors in the coronary plaques were not assessed. Finally, the duration of CKD was not assessed although it can closely link to chronic inflammatory processes and may contribute to the progression of coronary atheromatous plaques.

### Conclusions

The factors that contribute to tissue characteristics of coronary plaques differ depending on the renal function of patients with T2DM. MAGE in patients with eGFR  $\geq 60$  mL/min/1.73 m<sup>2</sup> and serum TNF- $\alpha$  in those with eGFR  $< 60$  mL/min/1.73 m<sup>2</sup> were independently associated with coronary plaque vulnerability.

### Additional file

**Additional file 1: Table S1.** Medications.

### Abbreviations

T2DM: type 2 diabetes mellitus; ACS: acute coronary syndrome; IVUS: intravascular ultrasound; ICA: invasive coronary angiography; CAD: coronary artery disease; CGM: continuous glucose monitoring; eGFR: estimated glomerular filtration rate; CSA: cross-sectional area; EEM: external elastic membrane; TNF: tumor necrosis factor; MAGE: mean amplitude of glycemic excursions; IQR: interquartile range; ICCs: intra-class correlation coefficients; %LV: percent lipidic volume; %CV: percent calcified volume; %FV: percent fibrotic volume; %NV: percent necrotic volume; CKD: chronic kidney disease; HMGB1: high-mobility group protein B1; cTNFRs: circulating tumor necrosis factor receptors.

### Authors' contributions

KK designed the study, analyzed the data, performed the statistical analysis and wrote the manuscript. KD wrote the manuscript. TY, MK and TO interpreted the data. JM, TK, NY and YS critically revised the manuscript for key intellectual content. MI provided final approval of the version to be published. All authors read and approved the final manuscript.

### Author details

<sup>1</sup> Department of Cardiology and Nephrology, Mie University Graduate School of Medicine, 2-174 Edobashi, Tsu 514-8507, Japan. <sup>2</sup> Department of Cardiology, JCHO Yokkaichi Hazu Medical Center, Yokkaichi, Japan. <sup>3</sup> Department of Diabetes and Endocrinology, JCHO Yokkaichi Hazu Medical Center, Yokkaichi, Japan. <sup>4</sup> Clinical Research Support Center, Mie University Hospital, Tsu, Japan.

### Acknowledgements

We are grateful to Naoki Nishimura and Naoki Yamaguchi for technical assistance.

### Competing interests

KD received lecture fees equal to or more than 500,000 yen from Otsuka Pharma Inc. in 2016. NY received lecture fees equal to or more than 500,000 yen from Bayer Yakuin, Ltd. and Bristol-Myers Squibb in 2016. YS received lecture fees of equal to or more than 500,000 yen from MSD K.K. MI received

lecture fees equal to or more than 500,000 yen from Bayer Yakuin, Ltd., Daiichi Sankyo Co. Ltd. and Mitsubishi Tanabe Pharma Corporation in 2016. The Department of Cardiology and Nephrology, Mie University Graduate School of Medicine was supported in part by unrestricted research grants equal to or more than 1,000,000 yen from Daiichi Sankyo Co. Ltd., Shionogi & Co., Ltd., Sumitomo Dainippon Pharma Co., Ltd., MSD K.K., Astellas Pharma Inc., Takeda Pharmaceutical Company Limited, Pfizer Japan Inc. and Nippon Boehringer Ingelheim Co., Ltd. in 2016.

### Availability of data and materials

All data generated or analyzed during this study are included in this published article.

### Consent for publication

If the manuscript is accepted, we approve it for publication in *Cardiovascular Diabetology*.

### Ethics approval and consent to participate

The study complied with the Declaration of Helsinki, and the protocol was approved for use by the Human Studies Subcommittee of Yokkaichi Hazu Medical Center (reference number 84). Written informed consent was obtained from all subjects.

### Funding

None.

### Publisher's Note

Springer Nature remains neutral with regard to jurisdictional claims in published maps and institutional affiliations.

Received: 28 July 2017 Accepted: 6 October 2017

Published online: 12 October 2017

### References

- Okada K, Hibi K, Gohbara M, Kataoka S, Takano K, Akiyama E, et al. Association between blood glucose variability and coronary plaque instability in patients with acute coronary syndromes. *Cardiovasc Diabetol*. 2015;14:111.
- Teraguchi I, Imanishi T, Ozaki Y, Tanimoto T, Orii M, Shiono Y, et al. Impact of glucose fluctuation and monocyte subsets on coronary plaque rupture. *Nutr Metab Cardiovasc Dis*. 2014;24:309–14.
- Kuroda M, Shinke T, Sakaguchi K, Otake H, Takaya T, Hirota Y, et al. Effect of daily glucose fluctuation on coronary plaque vulnerability in patients pre-treated with lipid-lowering therapy: a prospective observational study. *JACC Cardiovasc Interv*. 2015;8:800–11.
- Kataoka S, Gohbara M, Iwahashi N, Sakamaki K, Nakachi T, Akiyama E, et al. Glycemic variability on continuous glucose monitoring system predicts rapid progression of non-culprit lesions in patients with acute coronary syndrome. *Circ J*. 2015;79:2246–54.
- Gohbara M, Hibi K, Mitsuhashi T, Maejima N, Iwahashi N, Kataoka S, et al. Glycemic variability on continuous glucose monitoring system correlates with non-culprit vessel coronary plaque vulnerability in patients with first-episode acute coronary syndrome—optical coherence tomography study. *Circ J*. 2016;80:202–10.
- Koga S, Ikeda S, Miura M, Yoshida T, Nakata T, Koide Y, et al. iMap-intravascular ultrasound radiofrequency signal analysis reflects plaque components of optical coherence tomography-derived thin-cap fibroatheroma. *Circ J*. 2015;79:2231–7.
- Sathyanarayana S, Carlier S, Li W, Thomas L. Characterisation of atherosclerotic plaque by spectral similarity of radiofrequency intravascular ultrasound signals. *EuroIntervention*. 2009;5:133–9.
- Amano T, Matsubara T, Uetani T, Nanki M, Marui N, Kato M, et al. Impact of metabolic syndrome on tissue characteristics of angiographically mild to moderate coronary lesions integrated backscatter intravascular ultrasound study. *J Am Coll Cardiol*. 2007;49:1149–56.
- Masuda J, Tanigawa T, Yamada T, Nishimura Y, Sasou T, Nakata T, et al. Effect of combination therapy of ezetimibe and rosuvastatin on

- regression of coronary atherosclerosis in patients with coronary artery disease. *Int Heart J*. 2015;56:278–85.
10. Matsuo S, Imai E, Horio M, Yasuda Y, Tomita K, Nitta K, et al. Revised equations for estimated GFR from serum creatinine in Japan. *Am J Kidney Dis*. 2009;53:982–92.
  11. Shimbo Y, Suzuki S, Ishii H, Shibata Y, Tatami Y, Harata S, et al. Association of estimated glomerular filtration rate and proteinuria with lipid-rich plaque in coronary artery disease. *Circ J*. 2015;79:2263–70.
  12. Service FJ, Molnar GD, Rosevear JW, Ackerman E, Gatewood LC, Taylor WF. Mean amplitude of glycemic excursions, a measure of diabetic instability. *Diabetes*. 1970;19:644–55.
  13. Desouza C, Salazar H, Cheong B, Murgu J, Fonseca V. Association of hypoglycemia and cardiac ischemia: a study based on continuous monitoring. *Diabetes Care*. 2003;26:1485–9.
  14. Steg PG, James SK, Atar D, Badano LP, Blomstrom-Lundqvist C, Borger MA, et al. ESC Guidelines for the management of acute myocardial infarction in patients presenting with ST-segment elevation. *Eur Heart J*. 2012;33:2569–619.
  15. Amano T, Matsubara T, Uetani T, Nanki M, Marui N, Kato M, et al. Abnormal glucose regulation is associated with lipid-rich coronary plaque: relationship to insulin resistance. *JACC Cardiovasc Imaging*. 2008;1:39–45.
  16. Nasu K, Tsuchikane E, Katoh O, Fujita H, Surmely JF, Ehara M, et al. Plaque characterisation by virtual histology intravascular ultrasound analysis in patients with type 2 diabetes. *Heart*. 2008;94:429–33.
  17. Libby P, Ridker PM, Maseri A. Inflammation and atherosclerosis. *Circulation*. 2002;105:1135–43.
  18. Kobayashi S, Inoue N, Ohashi Y, Terashima M, Matsui K, Mori T, et al. Interaction of oxidative stress and inflammatory response in coronary plaque instability: important role of C-reactive protein. *Arterioscler Thromb Vasc Biol*. 2003;23:1398–404.
  19. Zouridakis E, Avanzas P, Arroyo-Espliguero R, Fredericks S, Kaski JC. Markers of inflammation and rapid coronary artery disease progression in patients with stable angina pectoris. *Circulation*. 2004;110:1747–53.
  20. Wu N, Shen H, Liu H, Wang Y, Bai Y, Han P. Acute blood glucose fluctuation enhances rat aorta endothelial cell apoptosis, oxidative stress and pro-inflammatory cytokine expression in vivo. *Cardiovasc Diabetol*. 2016;15:109.
  21. Rizzo MR, Barbieri M, Marfella R, Paolisso G. Reduction of oxidative stress and inflammation by blunting daily acute glucose fluctuations in patients with type 2 diabetes: role of dipeptidyl peptidase-IV inhibition. *Diabetes Care*. 2012;35:2076–82.
  22. Kawai H, Sarai M, Motoyama S, Harigaya H, Ito H, Sanda Y, et al. Coronary plaque characteristics in patients with mild chronic kidney disease. Analysis by 320-row area detector computed tomography. *Circ J*. 2012;76:1436–41.
  23. Miyagi M, Ishii H, Murakami R, Isebe S, Hayashi M, Amano T, et al. Impact of renal function on coronary plaque composition. *Nephrol Dial Transplant*. 2010;25:175–81.
  24. Hayano S, Ichimiya S, Ishii H, Kanashiro M, Watanabe J, Kurebayashi N, et al. Relation between estimated glomerular filtration rate and composition of coronary arterial atherosclerotic plaques. *Am J Cardiol*. 2012;109:1131–6.
  25. Kato K, Yonetsu T, Jia H, Abtahian F, Vergallo R, Hu S, et al. Nonculprit coronary plaque characteristics of chronic kidney disease. *Circ Cardiovasc Imaging*. 2013;6:448–56.
  26. Kono K, Fujii H, Nakai K, Goto S, Shite J, Hirata K, et al. Composition and plaque patterns of coronary culprit lesions and clinical characteristics of patients with chronic kidney disease. *Kidney Int*. 2012;82:344–51.
  27. Nakano T, Ninomiya T, Sumiyoshi S, Fujii H, Doi Y, Hirakata H, et al. Association of kidney function with coronary atherosclerosis and calcification in autopsy samples from Japanese elders: the Hisayama study. *Am J Kidney Dis*. 2010;55:21–30.
  28. Parameswaran N, Patial S. Tumor necrosis factor-alpha signaling in macrophages. *Crit Rev Eukaryot Gene Expr*. 2010;20:87–103.
  29. Kim JS, Lee SG, Oh J, Park S, Park SI, Hong SY, et al. Development of advanced atherosclerotic plaque by injection of inflammatory proteins in a rabbit iliac artery model. *Yonsei Med J*. 2016;57:1095–105.
  30. Stenvinkel P, Ketteler M, Johnson RJ, Lindholm B, Pecoits-Filho R, Riella M, et al. IL-10, IL-6, and TNF-alpha: central factors in the altered cytokine network of uremia—the good, the bad, and the ugly. *Kidney Int*. 2005;67:1216–33.
  31. Kon V, Linton MF, Fazio S. Atherosclerosis in chronic kidney disease: the role of macrophages. *Nat Rev Nephrol*. 2011;7:45–54.
  32. Tonelli M, Sacks F, Pfeffer M, Jhangri GS, Curhan G. Biomarkers of inflammation and progression of chronic kidney disease. *Kidney Int*. 2005;68:237–45.

Submit your next manuscript to BioMed Central and we will help you at every step:

- We accept pre-submission inquiries
- Our selector tool helps you to find the most relevant journal
- We provide round the clock customer support
- Convenient online submission
- Thorough peer review
- Inclusion in PubMed and all major indexing services
- Maximum visibility for your research

Submit your manuscript at  
[www.biomedcentral.com/submit](http://www.biomedcentral.com/submit)

