

RESEARCH

Open Access



# Admission glucose as a prognostic marker for all-cause mortality and cardiovascular disease

Catarina Djupsjö<sup>1,2\*</sup>, Jeanette Kuhl<sup>1,3</sup>, Tomas Andersson<sup>4,5</sup>, Magnus Lundbäck<sup>6</sup>, Martin J. Holzmänn<sup>1,7</sup> and Thomas Nyström<sup>8,9</sup>

## Abstract

**Background:** Diabetes and prediabetes are known risk factors for cardiovascular disease and associated with increased mortality risk. Whether patients with a random elevated blood glucose level but no history of diabetes are at a higher mortality and cardiovascular risk is not entirely known.

**Methods:** A retrospective cohort study where patients (18–80 years) with no history of diabetes between 2006 and 2016 attending the emergency department (ED) in Sweden were included. Based on the first (index) blood glucose level patients were categorized into four groups: hypoglycemia (< 3.9 mmol/L), normal glucose tolerance (NGT) (3.9–7.8 mmol/L), dysglycemia (7.8–11.1 mmol/L), and hyperglycemia (> 11.1 mmol/L). Data was collected from four nationwide registers (National Patient Register, National Cause of Death Register, Prescribed Drug Register and Statistics Sweden). Cox regression was used to calculate adjusted hazard ratios (HR) with 95% confidence intervals (CI) for all-cause mortality and cardiovascular outcomes using NGT as reference.

**Results:** 618,694 patients were included during a mean follow-up time of 3.9 years. According to the index blood glucose level: 1871 (0.3%) had hypoglycemia, 525,636 (85%) had NGT, 77,442 (13%) had dysglycemia, and 13,745 (2%) patients had hyperglycemia, respectively. During follow-up 44,532 (7.2%) deaths occurred. After multiple adjustments, mortality risk was highest in patients with hypoglycemia HR 2.58 (2.26–2.96) followed by patients with hyperglycemia HR 1.69 (1.63–1.76) and dysglycemia HR 1.16 (1.13–1.19). Risk for cardiovascular events: i.e., myocardial infarction, stroke and heart failure, were highest among patients with hyperglycemia HR 2.28 (2.13–2.44), HR 1.62 (1.51–1.74) and HR 1.60 (1.46–1.75), respectively.

**Conclusion:** Patients with disturbed blood glucose level at ED admission have a higher mortality risk than patients with NGT. Patients with hyperglycemia have almost a two folded increased long-term mortality risk and more than a doubled risk for cardiovascular events compared to patients with NGT.

**Keywords:** Random plasma glucose, Metabolic status, Cardiovascular disease, Mortality, Emergency department

## Background

Patients attending the emergency department (ED) may have elevated blood glucose, without having diabetes, which is suggested to be due to stress [1] and explained by different physiological mechanisms compared to prediabetes and type 2 diabetes [2]. Studies have shown that an elevated admission blood glucose level, in correlation

\*Correspondence: catarina.djupsjo@kth.se

<sup>1</sup> Department of Medicine, Karolinska Institutet, Stockholm, Sweden  
Full list of author information is available at the end of the article



© The Author(s) 2022, corrected publication 2022. **Open Access** This article is licensed under a Creative Commons Attribution 4.0 International License, which permits use, sharing, adaptation, distribution and reproduction in any medium or format, as long as you give appropriate credit to the original author(s) and the source, provide a link to the Creative Commons licence, and indicate if changes were made. The images or other third party material in this article are included in the article's Creative Commons licence, unless indicated otherwise in a credit line to the material. If material is not included in the article's Creative Commons licence and your intended use is not permitted by statutory regulation or exceeds the permitted use, you will need to obtain permission directly from the copyright holder. To view a copy of this licence, visit <http://creativecommons.org/licenses/by/4.0/>. The Creative Commons Public Domain Dedication waiver (<http://creativecommons.org/publicdomain/zero/1.0/>) applies to the data made available in this article, unless otherwise stated in a credit line to the data.

with a specific condition, such as: myocardial infarction, stroke, heart failure or pneumonia is associated with a higher in-hospital mortality, increased length of hospital stay, and a higher rate of in-hospital complications [3–12]. Long-term mortality risk and risk of cardiovascular events and its association to a random blood glucose level at ED admission has previously been studied in different health interview surveys [13–15]. It was recently shown that in an unselected small cohort of patients admitted to an acute general medical ward, patients with one elevated blood glucose, no matter the cause of admission, had a higher mortality after one year, but not after two years [16].

Studies demonstrate that cardiovascular complications from diabetes can appear at the same time as diabetes is diagnosed, as previously undiagnosed diabetes and impaired glucose tolerance are common in patients with acute myocardial infarction [17]. Approximately two-thirds of patients admitted for acute myocardial infarction have unknown disturbances of glucose metabolism detected by either glycated hemoglobin A1c (HbA1c) at admission, oral glucose tolerance test (OGTT), or a fasting blood glucose (FPG) concentration [18]; with similar results after 3 months of follow-up [19]. The same picture was found in elderly patients with stroke, whereas HbA1c and OGTT revealed that almost two-thirds of the patients had unknown disturbances of glucose metabolism at the time of their stroke, although at three months follow-up the disturbances of glucose levels were less noticeable [20].

The association between elevated random blood glucose levels at hospital admission and short-term outcome is well studied [7, 12]. Whether a simple random blood glucose level also can predict outcomes such as death and cardiovascular complications in the long run is less studied in a European population [14, 15]. The aim of the present study is to investigate the association of a random blood glucose level at ED admission and mortality risk and cardiovascular events, i.e., myocardial infarction, stroke and heart failure, in patients with no history of diabetes.

## Methods

### Study design

This is a retrospective cohort study. Study reporting followed the STROBE guidelines for observational studies using routinely collected data [21]. The study complied with the Declaration of Helsinki and was approved by the regional research ethics committee in Stockholm, Sweden (2018/1089-31, 2019–02339 and 2020–05925).

### Study population

From 2006 to 2016, all patients 18–80 years of age, attending the ED in four hospitals in Stockholm, Sweden (i.e., Karolinska University Hospital Huddinge, Karolinska University Hospital Solna, Danderyd University Hospital and Södersjukhuset) and three hospitals in Gothenburg, Sweden (i.e., Sahlgrenska Hospital, Östra Hospital and Mölndal Hospital), were included.

Only the first visit to the ED during the study period was accepted as an inclusion to the study. History of diabetes were determined by controlling which patients had collected antidiabetic treatment from the pharmacy according to the prescribed drug register (PDR) before admission [22]. Furthermore, patients with known diabetes (ICD 10 codes: E10–E14) from the national patient register (NPR) were also excluded.

Patient data was collected by individual-level data-linking using the unique personal identity number assigned to all persons living in Sweden [23, 24]. Baseline characteristics, hospital stay and medical data were collected from the national patient register (NPR) [25]. In collecting baseline characteristics, both primary and secondary diagnoses were accepted as medical history to ensure that the patients' medical backgrounds were fully identified. The index diagnosis, i.e., the reason why the patients were attending the ED in the first place was not included in the medical background. Information regarding mortality was collected from the national cause of death register [26] and cardiovascular mortality was defined as the primary diagnosis from the same register. For the definition of myocardial infarction, stroke and heart failure, ICD diagnosis codes from the NPR were used (Additional file 1: Table S1).

Information regarding revascularization (i.e., percutaneous coronary intervention [PCI]) and coronary artery bypass grafting [CABG]) was collected from NPR (Additional file 1: Table S1). Information about medication/drugs was collected from PDR [27], and all drugs collected 365 days before the visit to the ED were accepted. Information regarding socioeconomic status and education were collected from statistics Sweden (Statistiska Centralbyrån) [28].

### Exposure

Depending on the result from the random blood glucose level at admission to the ED, patients were divided into four glucose tolerance groups according to the American Diabetes Association 2021 [29].

- Hypoglycemia—Random plasma glucose value at <3.9 mmol/L.

- Normal glucose tolerance (NGT)—Random plasma glucose level at  $\geq 3.9$  to  $< 7.8$  mmol/L.
- Dysglycemia—Random plasma glucose level  $\geq 7.8$  to  $< 11.1$  mmol/L.
- Hyperglycemia—Random plasma glucose value  $\geq 11.1$  mmol/L.

All hospitals used plasma glucose as the measurement method except for the hospitals in Gothenburg where venous blood glucose was measured instead. The formula “plasma glucose = venous blood glucose  $\times$  1.11” was used to equalize all the measurements in the current study [30].

### Outcomes

The primary outcome was all-cause mortality. Secondary outcomes were cardiovascular events, i.e., cardiovascular mortality, myocardial infarction, stroke and hospitalization due to heart failure.

### Statistical methods

Patient characteristics were described using frequencies and percentages for categorical variables and means and standard deviations (SD) for continuous variables. For each outcome the person-time in years which was contributed by each patient, was calculated from the date of attending the ED to the date of death, myocardial infarction, stroke, heart failure or the end of the follow-up (31st December 2016). Separately for all outcomes, we calculated the crude incidence rates and 95% confidence intervals (CIs) by the following random blood glucose categories: hypoglycemia, NGT, dysglycemia and hyperglycemia. We used Cox regression to estimate the hazards ratios (HR) with NGT as the reference category. In the Cox models we used hospital as stratification variable and adjusted for visit date, age and sex. Thereafter we adjusted for all the remaining variables listed in Table 1 as covariates except for glucose. Finally, as a sensitive analysis, we also adjusted markers of acute stress, i.e., white blood cell (WBC) count. Fine and Gray method were used in Cox model when adjusting for competing risk [31]. Data management and statistical analyses were performed using SAS 9.4 for Windows (SAS Institute Inc) and R 4.1 ([www.R-project.org](http://www.R-project.org)).

## Results

### Baseline characteristics

Baseline characteristics are shown in Table 1. 618,694 patients with a mean age of 47.6 (17.9) years were included, of whom 299,159 (48.4%) were men. According to the categorization after the index blood glucose

level: 1871 (0.3%) had hypoglycemia, 525,636 (85%) had NGT, 77,442 (13%) had dysglycemia and 13,745 (2%) had hyperglycemia, respectively (Table 1). Patients with hyperglycemia were older and more often male compared to the other groups. The prevalence of hypertension, chronic obstructive pulmonary disease, prior stroke, and peripheral arterial disease was more common in patients with hyperglycemia. Patients with dysglycemia and hyperglycemia had the highest prevalence of atrial fibrillation, coronary heart disease, prior revascularization procedure (CABG and PCI), chronic kidney disease (CDK), and history of malignancy (i.e., any history of malignancy within 2 years prior to index-date), compared to the other groups. Patients with dysglycemia were more often treated with statin therapy, aspirin, P2Y12-inhibitors, angiotensin converting enzyme inhibitors (ACEI)/angiotensin receptor blockers (ARB) and oral anticoagulants (OAC) than the other groups.

### Early (30-day) outcomes—event, event rates and risk of mortality, myocardial infarction, stroke, and heart failure due to blood glucose level categorization

During the first 30-days a total of 4780 patients died (0.8%): 80 (4.3%) patients with hypoglycemia, 2452 (0.5%) patients with NGT, 1360 (1.8%) patients with dysglycemia and 888 (6.5%) patients with hyperglycemia, respectively. Event, event rates and HRs are all shown in Table 2.

Within the first 30-days, after multiple adjustments, patients with hypoglycemia had the highest risk of all-cause mortality HR 10.87 (95% CI 8.69–13.61), followed by patients with hyperglycemia HR 7.04 (95% CI 6.50–7.63), and patients with dysglycemia HR 2.14 (95% CI 1.99–2.29), respectively, compared to patients with NGT. In contrast patients with hyperglycemia had the highest risk of cardiovascular mortality HR 16.43 (95% CI 14.36–18.80) followed by patients with hypoglycemia HR 5.29 (95% CI 2.62–10.67), and patients with dysglycemia HR 3.13 (95% CI 2.74–3.58), compared to patients with NGT (Table 2).

After multiple adjustments, the risk of myocardial infarction, stroke and heart failure was highest among patients with hyperglycemia HR 3.39 (95% CI 3.10–3.70), HR 2.07 (95% CI 1.90–2.26) and HR 1.94 (95% CI 1.68–2.25), respectively, compared to patients with NGT. Corresponding numbers for patients with dysglycemia were HR 1.70 (95% CI 1.60–1.81), HR 1.44 (95% CI 1.37–1.51), and HR 1.21 (95% CI 1.10–1.33), respectively; and for patients with hypoglycemia HR 0.77 (95% CI 0.37–1.62), HR 1.07 (95% CI 0.64–1.77), and HR 0.53 (95% CI 0.20–1.42), respectively, compared to patients with NGT (Table 2).

**Table 1** Baseline characteristics in 618,694 patients attending the emergency department

Variables	All	Hypoglycemia < 3.9 mmol/L	NGT 3.9–7.7 mmol/L	Dysglycemia 7.8–11.1 mmol/L	Hyperglycemia > 11.1 mmol/L
n	618,694	1871	525,636	77,442	13,745
Age, Mean (SD)	47.6 (17.9)	39.6 (16.9)	46.2 (17.7)	56.1 (16.6)	57.2 (15.8)
Men, n (%)	299,151 (48.4)	778 (41.6)	247,466 (47.1)	42,510 (54.9)	8397 (61.1)
<i>Comorbidities</i>					
Hypertension, n (%)	47,340 (7.7)	105 (5.6)	36,009 (6.9)	9514 (12.3)	1712 (12.5)
Atrial fibrillation, n (%)	17,169 (2.8)	44 (2.4)	13,458 (2.6)	3127 (4.0)	540 (3.9)
Coronary heart disease, n (%)	23,272 (3.8)	52 (2.8)	17,925 (3.4)	4471 (5.8)	824 (6.0)
Prior CABG, n (%)	3015 (0.5)	6 (0.3)	2442 (0.5)	486 (0.6)	81 (0.6)
Prior PCI, n (%)	7337 (1.2)	9 (0.5)	5882 (1.1)	1245 (1.6)	201 (1.5)
Prior stroke, n (%)	11,427 (1.8)	33 (1.8)	8828 (1.7)	2170 (2.8)	396 (2.9)
Peripheral arterial disease, n (%)	1152 (0.2)	8 (0.4)	832 (0.2)	245 (0.3)	67 (0.5)
COPD, n (%)	8485 (1.4)	40 (2.1)	6378 (1.2)	1678 (2.2)	389 (2.8)
CKD, n (%)	2657 (0.4)	9 (0.5)	2060 (0.4)	487 (0.6)	101 (0.7)
<sup>a</sup> History of malignancy, n (%)	18,473 (3.0)	36 (1.9)	13,925 (2.6)	3813 (4.9)	699 (5.1)
<i>Laboratory values</i>					
eGFR, Mean (SD)	96.4 (21.9)	100.7 (28.5)	97.7 (21.4)	87.4 (22.5)	85.5 (26.1)
> 60 ml/min, n (%)	483,942 (94.4)	1 495 (91.5)	425 360 (95.3)	49 045 (88.9)	8 042 (82.8)
30–60 ml/min, n (%)	24,636 (4.8)	72 (4.4)	17 976 (4.0)	5 194 (9.4)	1 394 (14.3)
15–30 ml/min, n (%)	2778 (0.5)	43 (2.6)	1 912 (0.4)	624 (1.1)	199 (2.0)
< 15 ml/min, n (%)	1556 (0.3)	23 (1.4)	1 148 (0.3)	303 (0.5)	82 (0.8)
Random glucose, Mean (SD)	6.5 (2.6)	3.4 (0.5)	6.0 (0.8)	8.8 (0.8)	17.1 (10.7)
<i>Medication at index visit</i>					
Statin therapy, n (%)	46,885 (7.6)	65 (3.5)	35,598 (6.8)	9609 (12.4)	1613 (11.7)
Aspirin, n (%)	40,293 (6.5)	73 (3.9)	30,670 (5.8)	8150 (10.5)	1400 (10.2)
P2Y12inhibitors, n (%)	3439 (0.6)	11 (0.6)	2655 (0.5)	671 (0.9)	102 (0.7)
Betablockers, n (%)	64,023 (10.3)	132 (7.1)	48,563 (9.2)	12,916 (16.7)	2412 (17.5)
ACE/ARB, n (%)	72,244 (11.7)	98 (5.2)	55,309 (10.5)	14,347 (18.5)	2490 (18.1)
Calcium channel-blockers, n (%)	37,065 (6.0)	60 (3.2)	27,380 (5.2)	8186 (10.6)	1439 (10.5)
OAC, n (%)	14,056 (2.3)	24 (1.3)	11,046 (2.1)	2592 (3.3)	394 (2.9)
Diuretics, n (%)	32,342 (5.2)	72 (3.8)	23,945 (4.6)	6894 (8.9)	1431 (10.4)
<i>Socioeconomics</i>					
Married, n (%)	249,471 (40.3)	500 (26.7)	206,987 (39.4)	36,032 (46.5)	5952 (43.3)
Not married, n (%)	346,973 (56.1)	1333 (71.2)	301,880 (57.4)	36,788 (47.5)	6972 (50.7)
Widowed, n (%)	22,250 (3.6)	38 (2.0)	16,769 (3.2)	4622 (6.0)	821 (6.0)
<i>Education</i>					
Primary school, n (%)	131,308 (21.2)	495 (26.5)	109,027 (20.7)	1,991 (23.2)	3795 (27.6)
Collage, n (%)	254,441 (41.1)	734 (39.2)	216,009 (41.1)	31,968 (41.3)	5730 (41.7)

ACE, angiotensin converting enzyme inhibitors; ARB, angiotensin receptor blockers; CABG, coronary artery bypass grafting; COPD, chronic obstructive pulmonary disease; CKD, chronic kidney disease; eGFR, estimated glomerular filtration rate; OAC, oral anticoagulants; PCI, percutaneous coronary intervention SD, Standard deviation; n, number of patients

<sup>a</sup> Any history of malignancy within 2 years prior to index-date

### Long-term outcomes—event, event rate and risk of mortality and myocardial infarction, stroke and heart failure due to blood glucose level categorization

During a mean follow-up time of 3.9 years (maximum 9 years), a total of 44,532 (7.2%) patients died: 214 (11.5%) with hypoglycemia, 31,635 (6.0%) with NGT, 9858 (12.7%) with dysglycemia, and 2825 (20.6%) patients with

hyperglycemia, respectively. Events, event rate and HRs of mortality, myocardial infarction, stroke and heart failure between categorized groups are shown in Table 3. The long-term outcome of mortality is illustrated by a Kaplan Meier curve in Fig. 1. Long-term outcome of cardiovascular mortality, myocardial infarction, stroke, and

**Table 2** Early (30-day) event, event rates and relative risks for all-cause mortality, cardiovascular mortality, myocardial infarction, stroke and heart failure in 618,694 patients attending the emergency department

Variable	Glucose group	Event	Event rate 1000 PY (CI 95%)	Age, sex, date and hospital adjusted HR (CI 95%)	Multivariable <sup>a</sup> adjusted HR (CI 95%)	Multivariable <sup>a</sup> + WBC adjustments HR (CI 95%)
All-cause mortality	Hypoglycemia	80	540.5 (428.6–672.7)	14.32 (11.45–17.90)	10.51 (8.40–13.16)	10.87 (8.69–13.61)
	NGT	2452	57.1 (54.8–59.4)	1	1	1
	Dysglycemia	1360	216.8 (205.4–228.6)	2.32 (2.16–2.48)	2.10 (1.96–2.25)	2.14 (1.99–2.29)
	Hyperglycemia	888	829.9 (776.2–886.3)	8.50 (7.85–9.20)	6.95 (6.41–7.53)	7.04 (6.50–7.63)
CV mortality	Hypoglycemia	8	54.1 (23.3–106.5)	7.10 (3.53–14.28)	4.85 (2.40–9.80)	5.29 (2.62–10.67)
	NGT	511	11.9 (10.9–13.0)	1	1	1
	Dysglycemia	422	67.3 (61.0–74.0)	3.24 (2.83–3.70)	3.08 (2.69–3.51)	3.13 (2.74–3.58)
	Hyperglycemia	445	415.9 (378.1–456.4)	18.91 (16.56–21.60)	15.84 (13.85–18.12)	16.43 (14.36–18.80)
Myocardial Infarction	Hypoglycemia	7	47.3 (19.0–97.5)	0.77 (0.37–1.61)	0.79 (0.38–1.66)	0.77 (0.37–1.62)
	NGT	3824	89.6 (86.8–92.5)	1	1	1
	Dysglycemia	1606	261.0 (248.4–274.1)	1.72 (1.62–1.83)	1.72 (1.62–1.83)	1.70 (1.60–1.81)
	Hyperglycemia	624	603.5 (557.1–652.7)	3.45 (3.16–3.76)	3.42 (3.14–3.73)	3.39 (3.10–3.70)
Stroke	Hypoglycemia	15	102.0 (57.1–168.3)	1.05 (0.64–1.75)	1.09 (0.66–1.81)	1.07 (0.64–1.77)
	NGT	5921	139.2 (135.7–142.8)	1	1	1
	Dysglycemia	2120	346.0 (331.4–361.1)	1.45 (1.38–1.53)	1.46 (1.38–1.53)	1.44 (1.37–1.51)
	Hyperglycemia	582	562.3 (517.6–609.9)	2.13 (1.95–2.32)	2.12 (1.94–2.31)	2.07 (1.90–2.26)
Heart failure	Hypoglycemia	4	27.0 (7.4–69.2)	0.83 (0.31–2.21)	0.54 (0.20–1.45)	0.53 (0.20–1.42)
	NGT	1982	46.3 (44.3–48.4)	1	1	1
	Dysglycemia	599	96.1 (88.6–104.1)	1.21 (1.10–1.33)	1.22 (1.11–1.34)	1.21 (1.10–1.33)
	Hyperglycemia	206	195.1 (169.3–223.6)	2.24 (1.94–2.60)	1.98 (1.71–2.30)	1.94 (1.68–2.25)

CI, confidence interval; CV, cardiovascular; HR, Hazard Ratio; n, number of patients; NGT, normal glucose tolerance; PY, patient-years; WBC, white blood cell

<sup>a</sup> Adjustments for: age, sex, date, hospital, and all covariates listed in Table 1, and finally adjusted for WBC

hospitalization of heart failure are further illustrated in Kaplan Meier curves (Additional file 1: Fig. S1).

After multiple adjustments, the relative risk of all-cause mortality was highest among patients with hypoglycemia HR 2.58 (95% CI 2.26–2.96) followed by patients with hyperglycemia HR 1.69 (95% CI 1.63–1.76) and patients with dysglycemia HR 1.16 (95% CI 1.13–1.19), respectively, compared to the reference category of NGT. After multiple adjustments, the relative risk of cardiovascular mortality between groups was much the same as the relative risk for all-cause mortality (Table 3).

For the secondary outcomes, after multiple adjustments, the risk of myocardial infarction, stroke and heart failure were highest among patients with hyperglycemia HR 2.18 (95% CI 2.04–2.34), HR 1.54 (95% CI 1.44–1.65) and HR 1.49 (95% CI 1.36–1.63), respectively, compared to patients with NGT (Table 2). Corresponding numbers were for patients with dysglycemia HR 1.36 (95% CI 1.31–1.42), HR 1.19 (95% CI 1.15–1.24) and HR 1.08 (95% CI 1.03–1.14), respectively; and for patients with hypoglycemia HR 0.89 (0.57–1.37), HR 1.14 (95% CI 0.81–1.60), and 1.02 (95% CI 0.66–1.56), respectively, compared to patients with NGT (Table 3).

After excluding the first 30-day from the analysis the results were much the same as for the main analysis (Additional file 1: Table S2).

#### Sensitive analysis of early and long-term outcomes and competing risk analysis of long-term outcomes—event, event rate and risk of myocardial infarction, stroke and heart failure due to blood glucose level categorization

As the glucose levels of patients attending the ED may be influenced by acute stress, we finally adjusted our model for a marker of acute stress, i.e., WBC count, in which the relative risks of early and long-term outcomes did not change, supporting that there were no confounding effect from acute stress (Tables 2 and 3). The association between blood glucose levels and the relative risk of cardiovascular events with competing risk of death was also investigated. In a competing risk regression analysis, one could see that the sub distribution HRs for myocardial infarction, stroke and heart failure was not statistically affected after this analysis (Additional file 1: Table S3).



**Table 3** Long term event, event rates and relative risks for all-cause mortality, cardiovascular mortality, myocardial infarction, stroke and heart failure in 618 694 patients attending the emergency department

Variables	Glucose group	Event	Event rate 1000 PY (95% CI)	Age, sex, date and hospital adjusted HR (CI 95%)	Multivariable <sup>a</sup> adjusted HR (CI 95%)	Multivariable <sup>a</sup> + WBC adjustments HR (CI 95%)
All-cause mortality	Hypoglycemia	214	28.8(25.0–32.9)	3.15(2.76–3.61)	2.64(2.31–3.02)	2.58(2.26–2.96)
	NGT	31,635	15.3 (15–2–15.5)	1	1	1
	Dysglycemia	9858	31.6(31.0–32.3)	1.24(1.21–1.27)	1.20(1.17–1.23)	1.16(1.13–1.19)
	Hyperglycemia	2825	53.6(51.6–55.6)	2.04(1.96–2.12)	1.84(1.77–1.91)	1.69(1.63–1.76)
CV mortality	Hypoglycemia	43	5.8(4.2–7.8)	3.33(2.47–4.50)	2.59(1.91–3.49)	2.57 (1.90–3.47)
	NGT	6497	3.2(3.1–3.2)	1	1	1
	Dysglycemia	2335	7.5(7.2–7.8)	1.26(1.20–1.32)	1.26(1.20–1.32)	1.24(1.18–1.30)
	Hyperglycemia	927	17.6(16.5–18.8)	2.83(2.64–3.04)	2.56(2.38–2.74)	2.47(2.30–2.65)
Myocardial Infarction	Hypoglycemia	20	2.7(1.7–4.2)	1.03(0.66–1.59)	0.93(0.60–1.45)	0.89(0.57–1.37)
	NGT	8535	4.2(4.1–4.3)	1	1	1
	Dysglycemia	3030	10.0(9.7–10.4)	1.39(1.34–1.46)	1.39(1.33–1.45)	1.36(1.31–1.42)
	Hyperglycemia	940	18.7(17.5–20.0)	2.33(2.18–2.50)	2.28(2.13–2.44)	2.18(2.04–2.34)
Stroke	Hypoglycemia	34	4.6(3.2–6.5)	1.24(0.89–1.74)	1.19(0.85–1.67)	1.14(0.81–1.60)
	NGT	12,109	6.0(5.9–6.1)	1	1	1
	Dysglycemia	3748	12.5(12.1–12.9)	1.22(1.17–1.27)	1.22(1.18–1.27)	1.19(1.15–1.24)
	Hyperglycemia	913	18.2(17.1–19.5)	1.64(1.53–1.76)	1.62(1.51–1.74)	1.54(1.44–1.65)
Heart failure	Hypoglycemia	21	2.8(1.8–4.3)	1.46(0.95–2.25)	1.08(0.71–1.67)	1.02(0.66–1.56)
	NGT	6634	3.2(3.2–3.3)	1	1	1
	Dysglycemia	1907	6.2(5.9–6.5)	1.11(1.06–1.18)	1.11(1.06–1.17)	1.08(1.03–1.14)
	Hyperglycemia	522	10.2(9.3–11.1)	1.75(1.59–1.91)	1.60(1.46–1.75)	1.49(1.36–1.63)

CI, confidence interval; CV, cardiovascular; HR, Hazard Ratio; n, number of patients; NGT, normal glucose tolerance; PY, patient-years; WBC, white blood cell

<sup>a</sup> Adjustments for: age, sex, date, hospital, and all covariates listed in Table 1, and finally adjusted for WBC

### Mortality and cardiovascular event rates related to sex

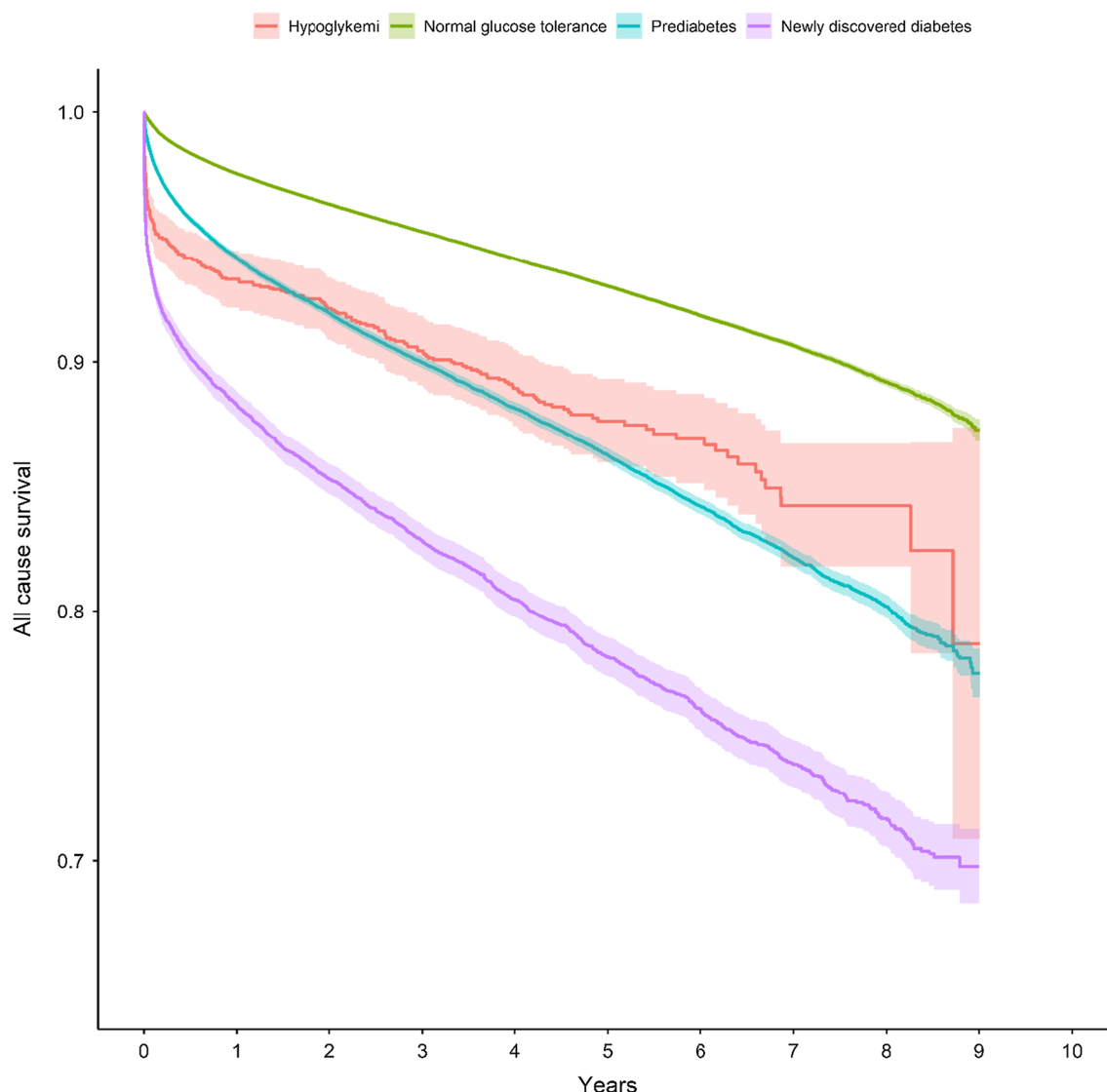
Event rates and risk of all-cause mortality, cardiovascular mortality, myocardial infarction, stroke and heart failure due to blood glucose level categorization in women and men, respectively, is presented in Additional file 1: Table S4. Age and sex standardized mortality rate for women was in the hypoglycemia group 57.2 (95% CI 37.5–76.9), NGT group 14.2 (95% CI 13.7–14.6), dysglycemia group 19.2 (95% CI 18.0–20.4) and hyperglycemia group 34.8 (95% CI 30.2–39.3), calculated per 1000 person-years, respectively. Corresponding numbers for men was in the hypoglycemia group 54.9 (95% CI 36.0–73.8), NGT group 20.1 (95% CI 19.5–20.6), dysglycemia group 23.5 (95% CI 22.3–24.8) and hyperglycemia group 40.5 (95% CI 36.4–44.5) calculated per 1000 person-years, respectively.

### Discussion

In this large observational study, it is shown that patients without previously known diabetes who were attending the ED at seven hospitals in Sweden between 2008 and 2016 with one random blood glucose above 7.8 mmol/L

had an increased risk of death and cardiovascular events compared to patients with NGT, i.e., 3.9–7.8 mmol/L. Patients with one random blood glucose level beneath 3.9 mmol/L also had an increased risk of death compared to patients with NGT.

Previous smaller studies have found that an elevated random blood glucose in patients admitted to the ED is associated with an early mortality risk, higher readmission rates and greater length of hospital stay. The present result from this large observational study confirms earlier short-, and long-term studies [4, 7, 12–15] but also suggests that a random blood glucose level at admission predicts death and cardiovascular outcome in patients without known diabetes at a long follow-up period (maximal 9 years). It was recently demonstrated in a small, unselected cohort of patients admitted to ED, that the admission blood glucose helps to predict one-year, but not two-year mortality [16]. In the current study one random elevated blood glucose level measured in patients admitted to ED was associated to both early- and long-term increased risk of mortality and cardiovascular events. Although, most events occurred within the first



**Fig. 1** Crude estimated Kaplan–Meier curve between blood glucose and death (all-cause mortality) in 618,694 patients with previous unknown diabetes categorized into four different groups, i.e., hypoglycemia (<3.9 mmol/L), normal glucose levels (3.9–7.7 mmol/L), dysglycemia (7.8–11.0 mmol/L) and hyperglycemia ( $\geq 11.1$  mmol/L) according to one random glucose blood level due to visiting emergency department at seven different hospitals in Sweden between 2006 and 2016

year, the findings were consistent in the long run, and so were also the findings when competing risk of death was controlled for.

In the present study approximately 15% of the patients had unknown disturbances of glucose metabolism. A proportion much lower compared to earlier studies in patients admitted to the hospital due to for example myocardial infarction [17–19]. Despite a lower proportion of

patients with hyperglycemia, compared to recent studies [17–19, 32, 33] the increased mortality risk and risk of cardiovascular events in patients were consistent and started already in patients categorized with mild hyperglycemia (dysglycemia). This also confirms recent studies demonstrating that even patients with mild elevated blood glucose level at hospital admission have a poorer

outcome and a higher risk for cardiovascular events, compared to persons with NGT [34, 35].

Since stress hyperglycemia is common in critically ill patients, which may be observed in patients attending the ED, and is suggested as a marker of disease severity [36] we further adjusted for WBC in our final model, revealing no such confounding effect. It is known that acute illness may result in hyperglycemia due to insulin resistance caused by multiple neuroendocrine response. This response has further been suggested as an essential survival response [36]. Nevertheless, several studies have pointed toward an association between elevated random blood glucose at admission in combination with different critical ill conditions, with poor outcome and increased mortality [3, 6, 10, 37]. However, attempts to treat critically ill patients with tight glycemic control does not affect the mortality risk [38]. We cannot prove any evidence of causality between the elevated blood glucose level and risk of mortality, or cardiovascular events observed in the current study. Neither can we say that patients with one elevated blood glucose level can be categorized having diabetes or prediabetes. However, it is more likely that patients with severe hyperglycemia will be diagnosed with diabetes, i.e., mostly type 2 diabetes, in which insulin resistance occur several years before the diagnosis. Insulin resistance is multifactorial caused by genetic and environmental factors (predominantly obesity), and in a certain situation such as acute illness it may result in a reduced effect of the insulin action, which causes elevated glucose levels [39, 40]. Also a mild elevated glucose level, which may be observed in persons with insulin resistance, is a risk marker and associated with an increased risk of cardiovascular outcomes and mortality [41]. Even though stress induced hyperglycemia has been suggested an essential survival response, elevated blood glucose levels in patients in an acute situation should raise concern and always be followed-up and treated to combat cardiovascular complications [42, 43].

Only patients without a history of diabetes were included in the present study. At admission one elevated random blood glucose level was associated to not only increased mortality risk, but also to a higher incidence of myocardial infarction, stroke, and heart failure. The higher the random blood glucose level at admission, the greater was the risk of these events, both at early and at long-term follow-up. Patients with hyperglycemia at admission had more than a doubled risk of myocardial infarction, stroke and heart failure compared to patients with normal blood glucose levels.

Due to the association between increased blood glucose levels at admission and the increased cardiovascular events in the long run there is reason to believe that these patients also developed diabetes. Chronic hyperglycemia is one strong, driven risk factor for the excess risk of cardiovascular events in both type 1 and type 2 diabetes over time [44, 45].

Patients admitted to the hospital for cardiovascular events often have a disturbed glucose metabolism and are usually screened by either FPG, HbA1c or OGTT to confirm diabetes or prediabetes [29]; whereas OGTT is the strongest predictor for cardiovascular events and therefore suggested the best tool in the screening for prediabetes [46, 47]. Not all persons with prediabetes will progress to type 2 diabetes; although these persons are still at higher cardiovascular risk compared to persons with NGT [41]. The risk of progression to type 2 diabetes depends on other factors such as obesity, sedentary lifestyle and sex. Lifestyle intervention and glucose lowering medication may halt this progression [48]. We do not have any information about these important factors, except for sex, in which males were at a higher absolute mortality risk compared to females. Although, the relative mortality and cardiovascular risk followed the same pattern in both sexes [49].

It is reported that critically ill patients (irrespective of diabetes and its treatment) may have hypoglycemia [50]. This is however uncommon in adults who are not treated for diabetes, which was reflected in the present study demonstrating a very low number of patients with hypoglycemia at admission (0.3%). This group was younger, more often female and with less proportion of cardiovascular disease at baseline. After adjustment for this and other confounding factors at baseline they had the highest early- and long-term all-cause mortality risk. In patients with type 2 diabetes studies report an U-shaped association between glycemic control, i.e., HbA1c, and mortality risk especially observed in patients on insulin treatment [51]. The present study excluded patients with known diabetes, wherefore patients with hypoglycemia should not have received any insulin treatment in relation to the blood glucose level at ED admission. A more likely explanation is non-diabetes hypoglycemia which may be due to a variety of causes, e.g., hepatic, renal and cardiac failure, sepsis, trauma, burns, hormone deficiency, poisoning and malnutrition [50], making this group extra vulnerable at the ED and important to be followed-up.



## Strengths

The strength of the present study was the large study population and the long follow-up period. Other strengths of this study were its accurate determination of all-cause mortality and cardiovascular outcomes of the high quality national Swedish health data registers.

## Limitations

Our analysis was limited to admission glucose values, and we could not determine how many patients with elevated glucose on admission had persistent hyperglycemia during hospitalization or in the long run. For the same reason we could also not assess the effectiveness of early, or long-term anti-diabetes treatment, or secondary prevention, e.g., treatment against the cardiovascular outcomes of interest. As in every observational study, a possibility of residual confounding by unmeasured factors cannot be eliminated.

## Conclusion

In this large observational study including patients without known diabetes, a random blood glucose above 7.8 mmol/L at ED admission was associated with an increased early- and long-term mortality risk and cardiovascular outcome events, a risk that was further increased if blood glucose raised above 11.1 mmol/L. Patients with one random blood glucose level beneath 3.9 mmol/L had both early- and long-term increased mortality risk. This indicates that a random blood glucose in the ED can help identify patients at risk and further controlled studies to improve their outcome should be considered.

## Supplementary Information

The online version contains supplementary material available at <https://doi.org/10.1186/s12933-022-01699-y>.

**Additional file 1: Table S1.** ICD diagnosis used to define cardiovascular death, myocardial infarction, stroke, heart failure, percutaneous coronary intervention (PCI) and coronary artery bypass graft (CABG). **Table S2.** 30-day to 2016 event rates and relative risks for all-cause mortality, cardiovascular mortality, myocardial infarction, stroke and heart failure in 618 694 patients attending emergency department. **Table S3.** Sensitive analysis (competing risk analysis for death) of long-term cardiovascular outcomes: event rate and risk of myocardial infarction, stroke and heart failure due to blood glucose level categorization. **Table S4.** Sex stratified event, event rates and relative risks for all-cause mortality, cardiovascular mortality, myocardial infarction, stroke and heart failure in 618 694 attending the emergency department. **Table S5.** Ten most common reasons for the visit to the emergency department. **Figure S1.** Crude estimated Kaplan–Meier curves for **a)** cardiovascular mortality **b)** myocardial infarction **c)** stroke and **d)** heart failure, in 618 694 patients with previous unknown diabetes categorized into four 4 groups, i.e. hypoglycemia (< 3.9 mmol/L), normal glucose levels (3.9–7.7 mmol/L), dysglycemia (7.8–11.0 mmol/L) and hyperglycemia ( $\geq$  11.1 mmol/L) according to one random glucose blood level due to visiting emergency department at seven different hospitals in Sweden between 2006–2016.

## Acknowledgements

In memoriam Martin J Holzman dead 5 June 2021.

## Author contributions

All authors planned the manuscript. CD and TN wrote a first draft of this manuscript. TA performed statistical calculations. All authors took part in interpreting the data. TN and CD take responsibility for the contents of the article. All authors read and approved the final manuscript.

## Funding

Open access funding provided by Karolinska Institute. This work was supported by the Swedish Heart and Lung Foundation, the Swedish Heart and Lung Association, the Swedish Society of Medicine and Stockholm County Council (ALF project). ML is supported by a Higher Clinical Researcher Grant from Karolinska Institutet and Stockholm County Council.

## Availability of data and materials

The datasets used and/or analysed during the current study are available from the corresponding author on reasonable request. The article does not contain any individual person data in any form.

## Declarations

### Ethics approval and consent to participate

The study complied with the Declaration of Helsinki and was approved by the regional research ethics committee in Stockholm, Sweden.

### Consent for publication

The authors have given their consent for publication and all the material except for detailed patient information will be available online or by request.

### Competing interests

TN has received unrestricted grants from AstraZeneca and NovoNordisk and has served on national advisory boards of Abbot, Amgen, Novo Nordisk, Sanofi-Aventis, Eli Lilly, MSD and Boehringer Ingelheim.

### Author details

<sup>1</sup>Department of Medicine, Karolinska Institutet, Stockholm, Sweden. <sup>2</sup>Heart and Vascular Theme, Karolinska University Hospital, Stockholm, Sweden. <sup>3</sup>Division of Medicine, Danderyd University Hospital, Stockholm, Sweden. <sup>4</sup>Institute of Environmental Medicine, Karolinska Institutet, Stockholm, Sweden. <sup>5</sup>Center for Occupational and Environmental Medicine, Stockholm County Council, Stockholm, Sweden. <sup>6</sup>Department of Clinical Sciences, Division of Cardiovascular Medicine, Danderyd University Hospital, Karolinska Institutet, Stockholm, Sweden. <sup>7</sup>Functional Area of Emergency Medicine, Karolinska University Hospital, Stockholm, Sweden. <sup>8</sup>Department of Clinical Science and Research, Karolinska Institutet, Stockholm, Sweden. <sup>9</sup>Division of Internal Medicine at Södersjukhuset, Stockholm, Sweden.

Received: 1 June 2022 Accepted: 16 November 2022

Published: 26 November 2022

## References

1. Dungan KM, Braithwaite SS, Preiser JC. Stress hyperglycaemia Lancet. 2009;373(9677):1798–807.
2. Van Cromphaut SJ. Hyperglycaemia as part of the stress response: the underlying mechanisms. Best Pract Res Clin Anaesthesiol. 2009;23(4):375–86.
3. Postma DF, et al. Do admission glucose levels aid in predicting mortality associated with community-acquired pneumonia? Eur Respir J. 2017. <https://doi.org/10.1183/13993003.00307-2017>.
4. Ma J, et al. Relationship between admission blood glucose level and prognosis in elderly patients without previously known diabetes who undergo emergency non-cardiac surgery. Intern Emerg Med. 2015;10(5):561–6.

5. Mellbin LG, et al. The relationship between glycaemic variability and cardiovascular complications in patients with acute myocardial infarction and type 2 diabetes: a report from the DIGAMI 2 trial. *Eur Heart J*. 2013;34(5):374–9.
6. Scherz N, et al. Elevated admission glucose and mortality in patients with acute pulmonary embolism. *Diabetes Care*. 2012;35(1):25–31.
7. Evans NR, Dhatriya KK. Assessing the relationship between admission glucose levels, subsequent length of hospital stay, readmission and mortality. *Clin Med (Lond)*. 2012;12(2):137–9.
8. Bakhai A, et al. Diabetic patients with acute coronary syndromes in the UK: high risk and under treated. Results from the prospective registry of acute ischaemic syndromes in the UK (PRAIS-UK). *Int J Cardiol*. 2005;100(1):79–84.
9. Fergus TS, et al. Presentation, management, and outcomes of diabetic patients compared to non-diabetic patients admitted for acute coronary syndromes. *Heart*. 2004;90(9):1051–2.
10. Williams LS, et al. Effects of admission hyperglycemia on mortality and costs in acute ischemic stroke. *Neurology*. 2002;59(1):67–71.
11. Umpierrez GE, et al. Hyperglycemia: an independent marker of in-hospital mortality in patients with undiagnosed diabetes. *J Clin Endocrinol Metab*. 2002;87(3):978–82.
12. Leite SA, et al. Impact of hyperglycemia on morbidity and mortality, length of hospitalization and rates of re-hospitalization in a general hospital setting in Brazil. *Diabetol Metab Syndr*. 2010;2:49.
13. Baumer J, et al. Association between random glucose and all-cause mortality: findings from the mortality follow-up of the German National Health interview and examination survey 1998. *BMC Endocr Disord*. 2018;18(1):95.
14. Vermunt J, et al. Random plasma glucose levels and cause-specific mortality among Chinese adults without known diabetes: an 11-year prospective study of 450,000 people. *BMJ Open Diabetes Res Care*. 2021. <https://doi.org/10.1136/bmjdr-2021-002495>.
15. Bragg F, et al. Association of Random plasma glucose levels with the risk for cardiovascular disease among Chinese adults without known diabetes. *JAMA Cardiol*. 2016;1(7):813–23.
16. Haddadin F, et al. Admission blood glucose helps predict 1 year, but not 2 years, mortality in an unselected cohort of acute general medical admissions. *Int J Clin Pract*. 2015;69(6):643–8.
17. Kosiborod M, et al. Admission glucose and mortality in elderly patients hospitalized with acute myocardial infarction: implications for patients with and without recognized diabetes. *Circulation*. 2005;111(23):3078–86.
18. Bartnik M, et al. Newly detected abnormal glucose tolerance: an important predictor of long-term outcome after myocardial infarction. *Eur Heart J*. 2004;25(22):1990–7.
19. Norhammar A, et al. Glucose metabolism in patients with acute myocardial infarction and no previous diagnosis of diabetes mellitus: a prospective study. *Lancet*. 2002;359(9324):2140–4.
20. Dave JA, et al. Abnormal glucose metabolism in non-diabetic patients presenting with an acute stroke: prospective study and systematic review. *QJM*. 2010;103(7):495–503.
21. von Elm E, et al. The strengthening the reporting of Observational Studies in Epidemiology (STROBE) statement: guidelines for reporting observational studies. *J Clin Epidemiol*. 2008;61(4):344–9.
22. Norhammar A, et al. Incidence, prevalence and mortality of type 2 diabetes requiring glucose-lowering treatment, and associated risks of cardiovascular complications: a nationwide study in Sweden, 2006–2013. *Diabetologia*. 2016;59(8):1692–701.
23. Ludvigsson JF, et al. The swedish personal identity number: possibilities and pitfalls in healthcare and medical research. *Eur J Epidemiol*. 2009;24(11):659–67.
24. Ludvigsson JF, et al. Registers of the swedish total population and their use in medical research. *Eur J Epidemiol*. 2016;31(2):125–36.
25. Socialstyrelsen. Patientregistret. 2018-11-09 2020-03-06. <https://www.socialstyrelsen.se/statistik-och-data/register/alla-register/patientregistret/>. Accessed 09 Feb 2021, 2022.
26. Socialstyrelsen. Dödsorsaksregistret. 2018. <https://www.socialstyrelsen.se/statistik-och-data/register/alla-register/dodsorsaksregistret/>. Accessed 25 Feb 2021.
27. Socialstyrelsen. Läkemedelsregistret. 2018 July 9th, 2020. <https://www.socialstyrelsen.se/statistik-och-data/register/alla-register/lakemedelsregistret/>. Accessed 10 Sept 2020.
28. Sweden SCS. 2021. <https://www.scb.se>. Accessed 2021.
29. American Diabetes Association. 2. Classification and diagnosis of diabetes: standards of medical care in diabetes-2021. *Diabetes Care*. 2021;44(Suppl 1):S15–s33.
30. Fogh-Andersen N, et al. Recommendation on reporting results for blood glucose (from an IFCC stage 1 document) IFCC scientific division working group on selective electrodes. *EJIFCC*. 2000;12(4):114–6.
31. Fine JP, Gray RJ. A proportional hazards model for the subdistribution of a competing risk. *J Am Stat Assoc*. 1999;94:496–509.
32. Yusuf S, et al. Effect of potentially modifiable risk factors associated with myocardial infarction in 52 countries (the INTERHEART study): case-control study. *Lancet*. 2004;364(9438):937–52.
33. Bartnik M, et al. The prevalence of abnormal glucose regulation in patients with coronary artery disease across Europe. The Euro Heart Survey on diabetes and the heart. *Eur Heart J*. 2004;25(21):1880–90.
34. Cai X, et al. Association between prediabetes and risk of all cause mortality and cardiovascular disease: updated meta-analysis. *BMJ*. 2020;370:m2297.
35. Zand A, Ibrahim K, Patham B. Prediabetes: why should we care? *Methodist Debakey Cardiovasc J*. 2018;14(4):289–97.
36. Marik PE, Bellomo R. Stress hyperglycemia: an essential survival response? *Crit Care*. 2013;17(2):305.
37. Singh AK, Singh R. At-admission hyperglycemia is consistently associated with poor prognosis and early intervention can improve outcomes in patients with COVID-19. *Diabetes Metab Syndr*. 2020;14(6):1641–4.
38. Van den Berghe G, et al. Intensive insulin therapy in the medical ICU. *N Engl J Med*. 2006;354(5):449–61.
39. DeFronzo RA, Tripathy D. Skeletal muscle insulin resistance is the primary defect in type 2 diabetes. *Diabetes Care*. 2009;32(Suppl 2):S157–63.
40. Tabák AG, et al. Prediabetes: a high-risk state for diabetes development. *Lancet*. 2012;379(9833):2279–90.
41. Ford ES, Zhao G, Li C. Pre-diabetes and the risk for cardiovascular disease: a systematic review of the evidence. *J Am Coll Cardiol*. 2010;55(13):1310–7.
42. Gast KB, et al. Insulin resistance and risk of incident cardiovascular events in adults without diabetes: meta-analysis. *PLoS ONE*. 2012;7(12):e52036.
43. McFarlane SI, Banerji M, Sowers JR. Insulin resistance and cardiovascular disease. *J Clin Endocrinol Metab*. 2001;86(2):713–8.
44. Lind M, et al. Glycemic control and excess mortality in type 1 diabetes. *N Engl J Med*. 2014;371(21):1972–82.
45. Tancredi M, et al. Excess mortality among persons with type 2 diabetes. *N Engl J Med*. 2015;373(18):1720–32.
46. Lind M, et al. The association between HbA1c, fasting glucose, 1-hour glucose and 2-hour glucose during an oral glucose tolerance test and cardiovascular disease in individuals with elevated risk for diabetes. *PLoS ONE*. 2014;9(10):e109506.
47. Beulens J, et al. Risk and management of pre-diabetes. *Eur J Prev Cardiol*. 2019;26(2\_suppl):47–54.
48. Tuomilehto J, et al. Prevention of type 2 diabetes mellitus by changes in lifestyle among subjects with impaired glucose tolerance. *N Engl J Med*. 2001;344(18):1343–50.
49. Reuterwall C, et al. Higher relative, but lower absolute risks of myocardial infarction in women than in men: analysis of some major risk factors in the SHEEP study. The SHEEP Study Group. *J Intern Med*. 1999;246(2):161–74.
50. Bansal N, Weinstock RS, et al. Non-diabetic hypoglycemia. In: Feingold KR, et al., editors. *Endotext*. South Dartmouth: MDText.com, Inc.; 2000.

51. Currie CJ, et al. Survival as a function of HbA(1c) in people with type 2 diabetes: a retrospective cohort study. *Lancet*. 2010;375(9713):481–9.

## Publisher's Note

Springer Nature remains neutral with regard to jurisdictional claims in published maps and institutional affiliations.

**Ready to submit your research? Choose BMC and benefit from:**

- fast, convenient online submission
- thorough peer review by experienced researchers in your field
- rapid publication on acceptance
- support for research data, including large and complex data types
- gold Open Access which fosters wider collaboration and increased citations
- maximum visibility for your research: over 100M website views per year

**At BMC, research is always in progress.**

Learn more [biomedcentral.com/submissions](https://biomedcentral.com/submissions)

